



Hera Mine Community Consultative Committee Minutes

The meeting was held on 1 November 2018 at the Hera Mine, Burthong Road, Nymagee.

Meeting commenced at 10.25am.

Present at the Meeting:

Garry West (Independent Chair)
Cr. Peter Maxwell (Cobar Shire Council Representative)
Graeme Bourke (Bogan Shire Council Representative)
Dolly Betts (Community Representative)
Des (David) Hill (Community Representative)
Phil Harley (Community Representative)
Jonathon Thompson (Aurelia Metals Ltd, Representative, Environment Superintendent)
Scott Ramsay (Aurelia metals Ltd, Representative, General Manager, Hera Mine Project)

1. Apologies

Megan Nicholson (Community Representative)
Don Cameron (Community Representative)

2. Pecuniary and other interests

Phillip Harley advised that exploration drilling was occurring on his property and access was being negotiated. The Chair and Members noted this declaration and accepted that there was no Pecuniary Interest conflict at this stage.

3. Confirmation of Minutes

Minutes from the CCC meeting of 2 August 2018 had been distributed via email and were accepted as a correct record.

4. Business Arising from Previous Meeting

Scott Ramsey advised he had attended the Careers Day at Cobar High School and he regarded it as a successful event as he was able to talk to some students about apprenticeships in general terms.

5. Correspondence

NIL

6. Company Report

A presentation was provided detailing the environmental performance of the Hera Mine operations. (A copy will accompany the final minutes and be placed on the company website);

No complaints were received for the reporting period.

One recordable injury to a Pybar employee had occurred during the last quarter as a result of a knife injury while opening ANFO bag requiring stitches.

J. Thompson provided an outline of the updated scope proposed MOD 5 as follows:

- The proposal to increase the rate of transportation of concentrate from Hera Mine to Hermidale rail siding from 50,000 t to 60,000 t per calendar year will not involve addition truck movements above the current approved limits.
- Installation of an external Tailings Storage Facility; and
- Receipt water from dewatering of the Nymagee Copper Mine for use in processing operations at the Hera Mine or evaporation within the proposed decant pond.

A briefing paper of the Modification has been lodged with the Department of Planning & Environment (DPE), distributed to the CCC members, distributed and discussed with the Nymagee Progress Association and distributed to various agencies and local councils.

It is hoped the Statement of Environmental Effects (SoEE) will be submitted to DPE late November or early December 2018 and will then go on display for public consultation.

S. Ramsay provided an overview of their ongoing exploration program with the Nymagee Metallurgical drill program due to finish in mid-August, the rig will move down to Hera to drill the surface exploration holes planned for south of the Hera Mine, including Juno, Hebe and Zeus targets.

The company provided a summary of production and processing and outlined the Financial Year Production schedule.

7. Matters which the Community Representatives wish to raise with the Mine Operator

Peter Maxwell sought clarification of the pipeline easement between Hera and Nymagee.

Possibility of drought funds being available for increased water storage at Nymagee is being explored through Cobar Shire Council.

8. Community Engagement Opportunities

The company was thanked for their support of the changes to the Nymagee Tennis Court and the inaugural Flower Show. The company was represented at the Festival of Miners Ghost including a wreath laying ceremony at the Miners Memorial at Cobar. The company's ongoing support of the Christmas Tree and the Cricket Team is also very much appreciated.

9. Meeting Dates

It was agreed that the CCC would continue to meet quarterly in 2019 and the following dates were agreed: 7 February 2019, 2 May 2019, 1 August 2019 and 7 November 2019.

10. General Business

Dolly Betts advised there would be morning tea at the Nymagee Hall as part of the Remembrance Day activities on 11 November.

11. Next Meeting

7 February 2019 commencing at 10am

Meeting Closed: 12.05 pm

ACTION ITEMS

Item	Action	By Whom
------	--------	---------

NIL

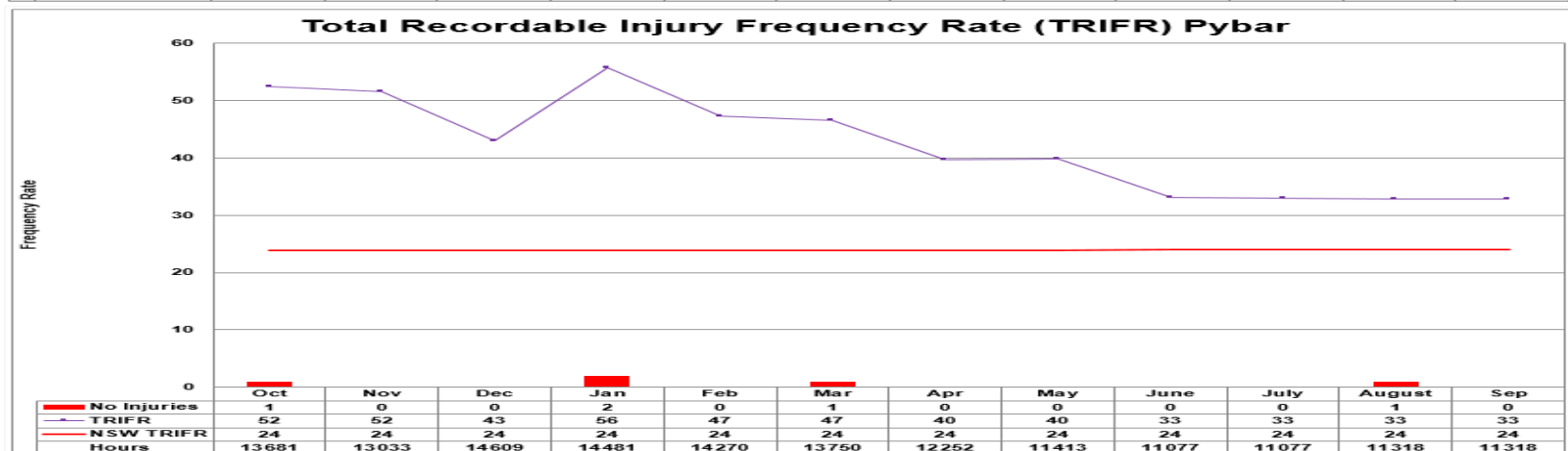
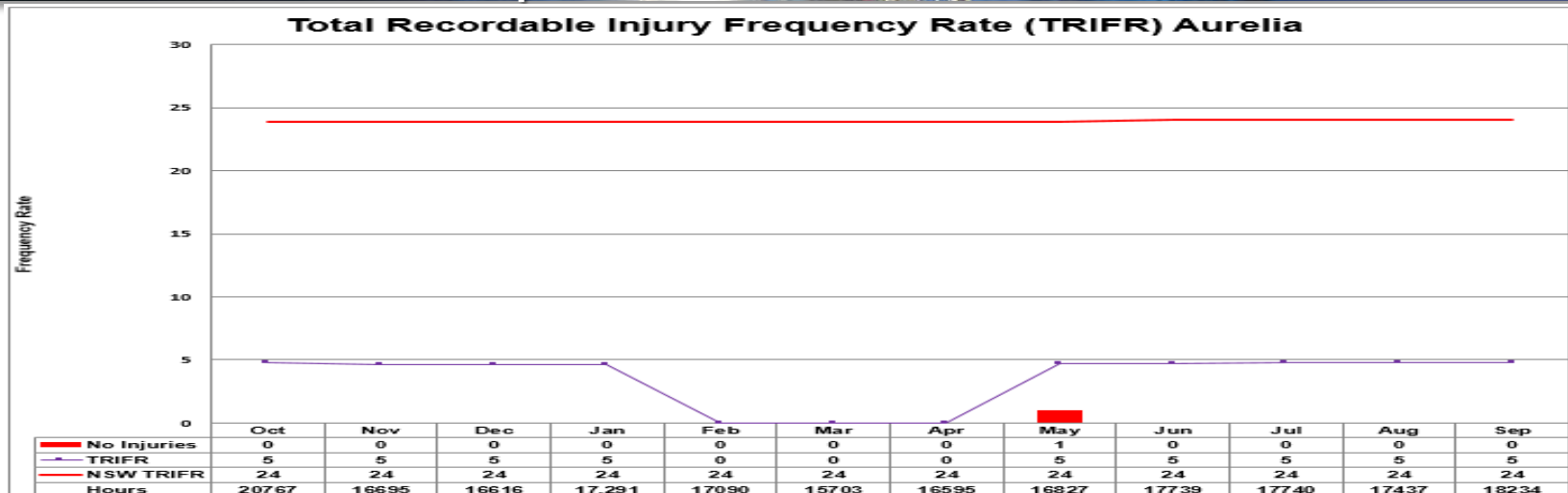


HERA PROJECT

CCC — November 2018

Hera Mine

WHS Incidents — Jul 18 to Sep 18



- 4 Aug 18 – Medically Treated Injury – Operated required stitches after receiving a laceration to forehead from their tool slipping while opening ANFO bag

UPDATED SCOPE OF MOD5

- MOD5 is to include a request to modify the Project Approval 10_0191 as follows:
 - Increase the rate of transportation of concentrate from Hera Mine to the Hermidale rail siding from 50 000 t per calendar year to 60 000 t per calendar year;
 - Installation of an external Tailings Storage Facility; and
 - Receipt water from dewatering of the Nymagee Copper Mine for use in processing operations at the Hera Mine or evaporation within the proposed decant pond.

CONSULTATION TO DATE

- A Briefing Paper was submitted to Department of Planning and Environment on 24 Aug 2018;
- The Briefing Paper was submitted to the Independent Chairperson of the CCC on 24 Aug 2018 for distribution to members of the CCC;
- A summary of the Briefing Paper was distributed and discussed at the Nymagee Progress Association Meeting on 29 Aug 2018;
- The Briefing Paper was submitted to various agencies (Cobar Shire Council, Bogan Shire Council, Department of Primary Industries – Division of Water, Division of Resources and Geoscience, Environmental Protection Authority, Office of Environment and Heritage, Resource Regulator and Roads and Maritime Services) on 18 Sep 2018 requesting comment for matters to be addressed in the Statement of Environmental Effects (SoEE); and
- Responses have been received from Cobar Shire Council, Roads and Maritime Services, Office of Environment and Heritage and Division of Resources and Geoscience. No significant matters have been raised and most have been generic responses to requests for comment.

Progress of MOD5

- Ecologists from AREA have attended site to conduct the biodiversity offsetting requirements associated with the proposed external decant pond. A draft report is expected in the next couple of weeks;
- GHD are currently working on the preliminary external decant pond and emergency spillway design. A draft report has been received and is expected to be finalised in the coming weeks;
- The Company hopes to submit the SoEE to Department of Planning and Environment in late November or early December 2018 so the document can go on display for public consultation prior to the Christmas shutdown period;
- Once finalised, a copy of the SoEE will be available at the reception of the Hera Mine Village and the Nymagee Metropolitan Hotel. A copy will also be distributed to members of the CCC via the Independent Chairperson

Hera Mine

WHS Incidents — Jul 18 to Sep 18

- No complaints received this quarter.

Hera Mine

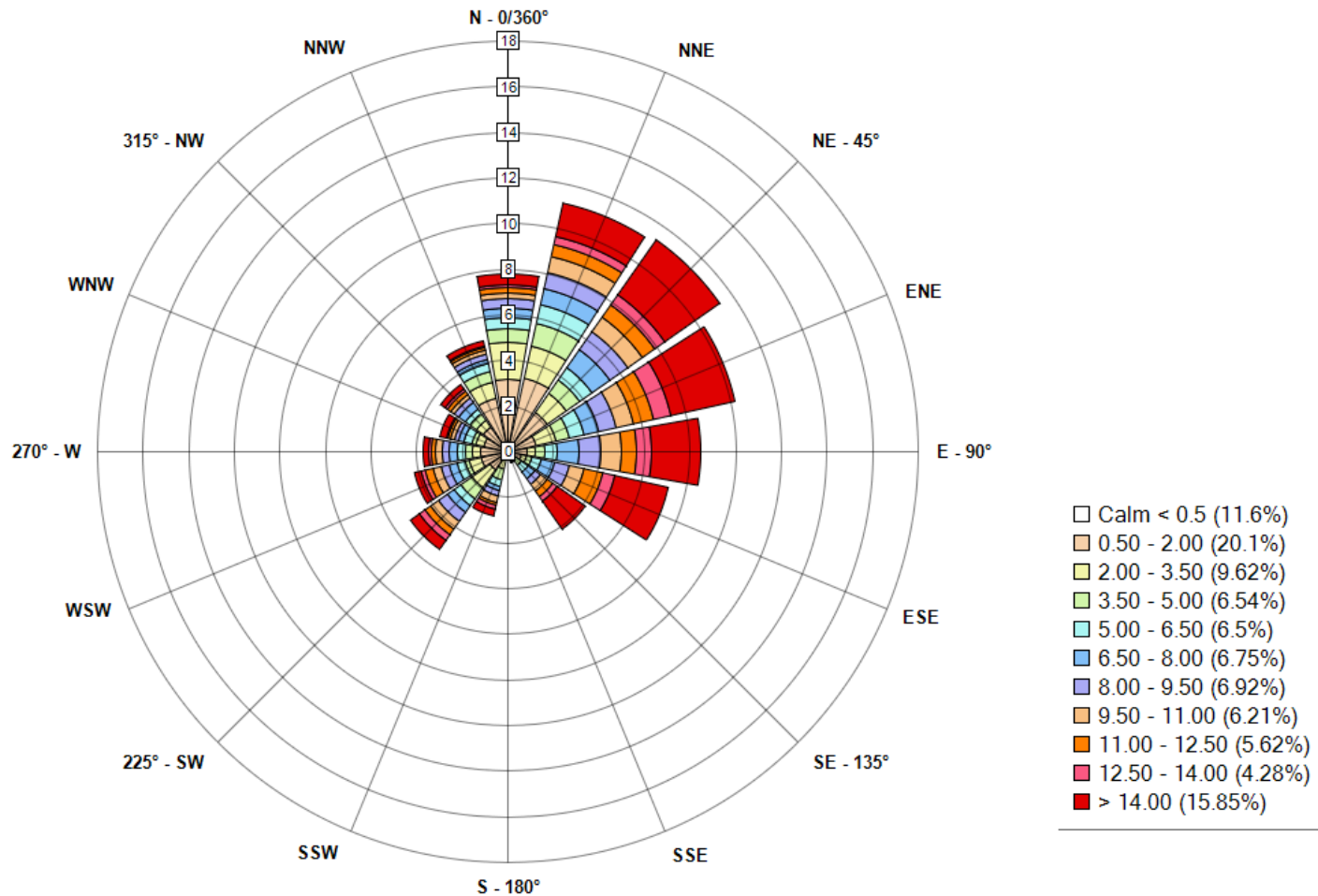
Environmental Monitoring — Jul 18 to Sep 18

Wind Rose Report for: Hera Resources - 10 Min Data

AVERAGE Wind Direction and AVERAGE Wind Speed in km/h

Period: 2017-07-01 00:00 to 2017-09-30 00:00

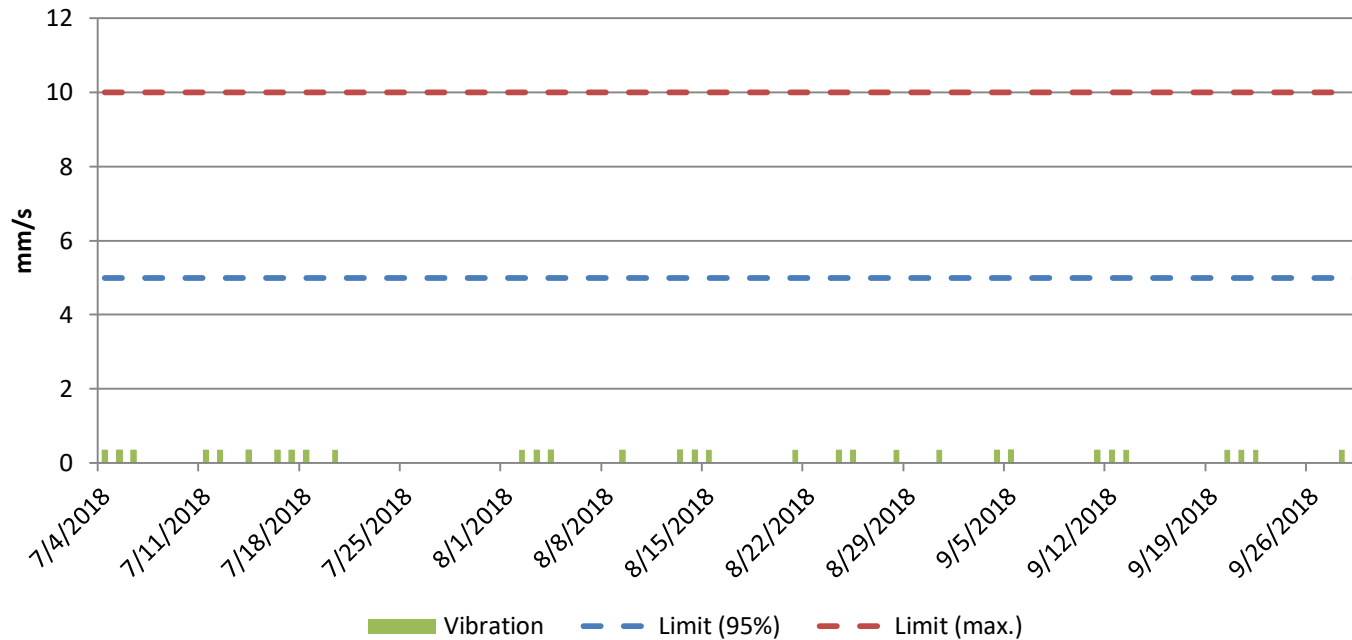
Direction the Wind is Blowing To



Hera Mine

Environmental Monitoring — Jul 18 to Sep 18

Jul to Sep 18 - Blast Vibration (Day Time Period)

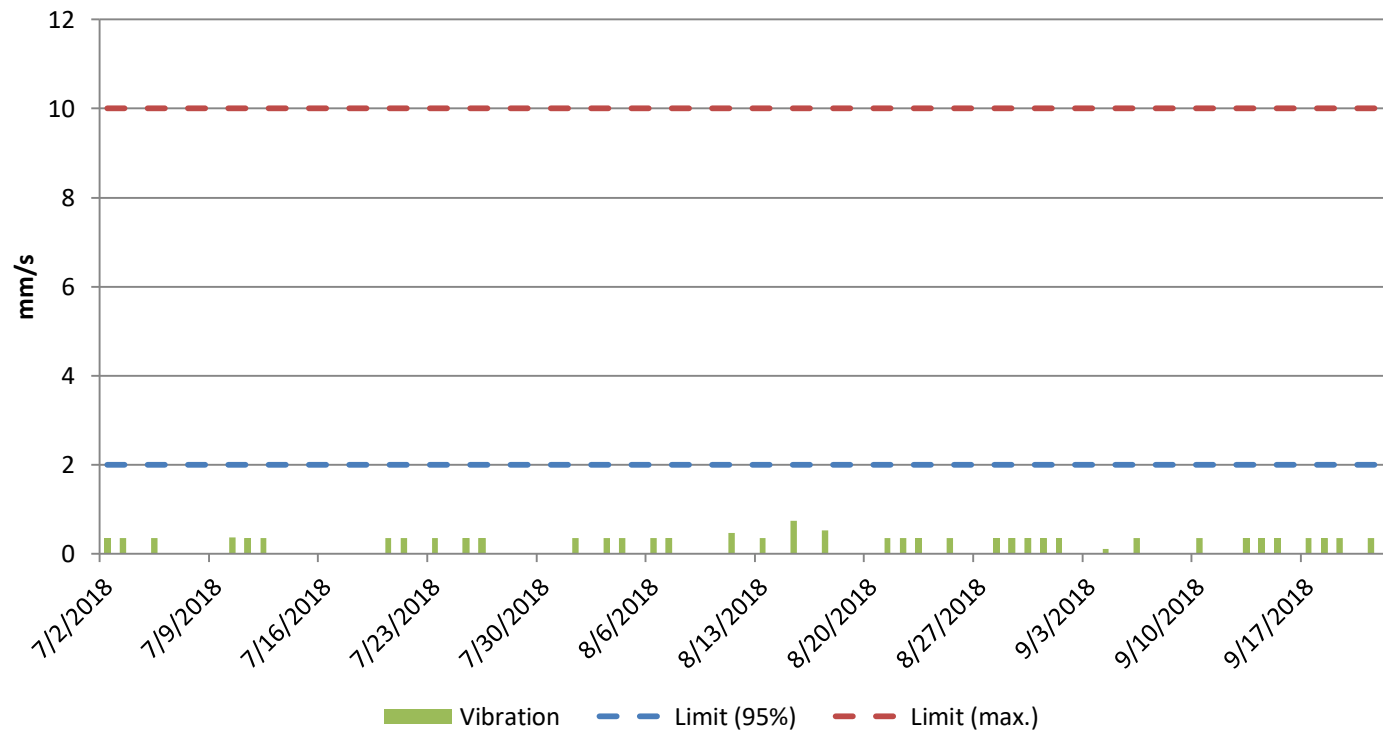


Day time period = 7am to 6pm Monday to Saturday

Hera Mine

Environmental Monitoring — Jul 18 to Sep 18

Jul to Sep 18 - Blast Vibration (Evening Time Period)

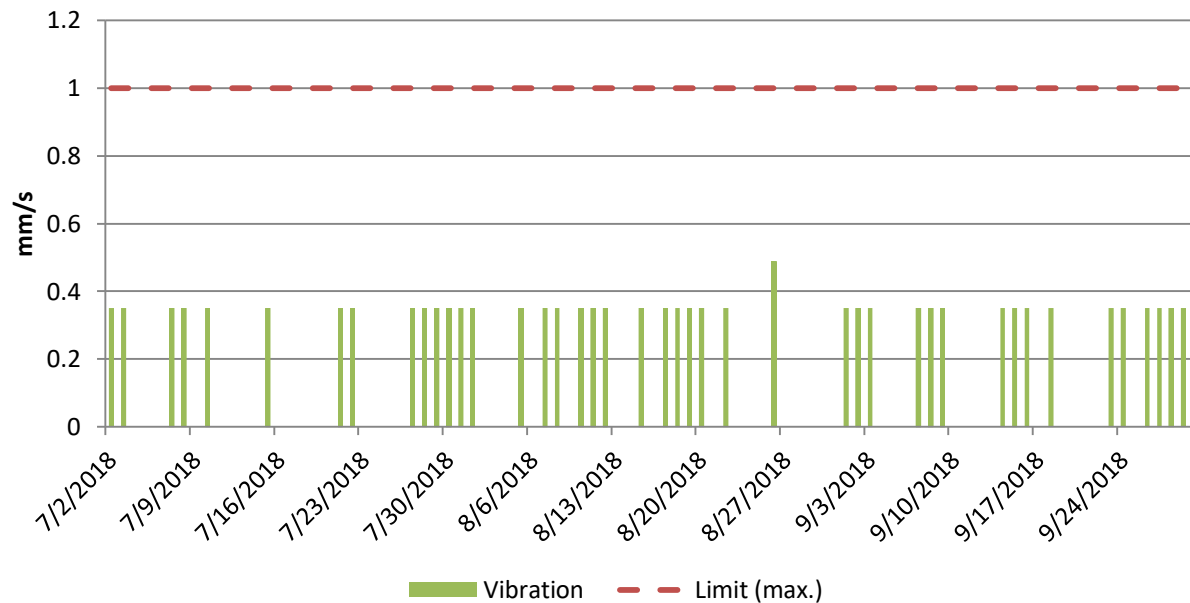


Evening time period = 6pm to 10pm Monday to Saturday

Hera Mine

Environmental Monitoring — Jul 18 to Sep 18

Jul to Sep 18 - Blast Vibration (Night Time Period)

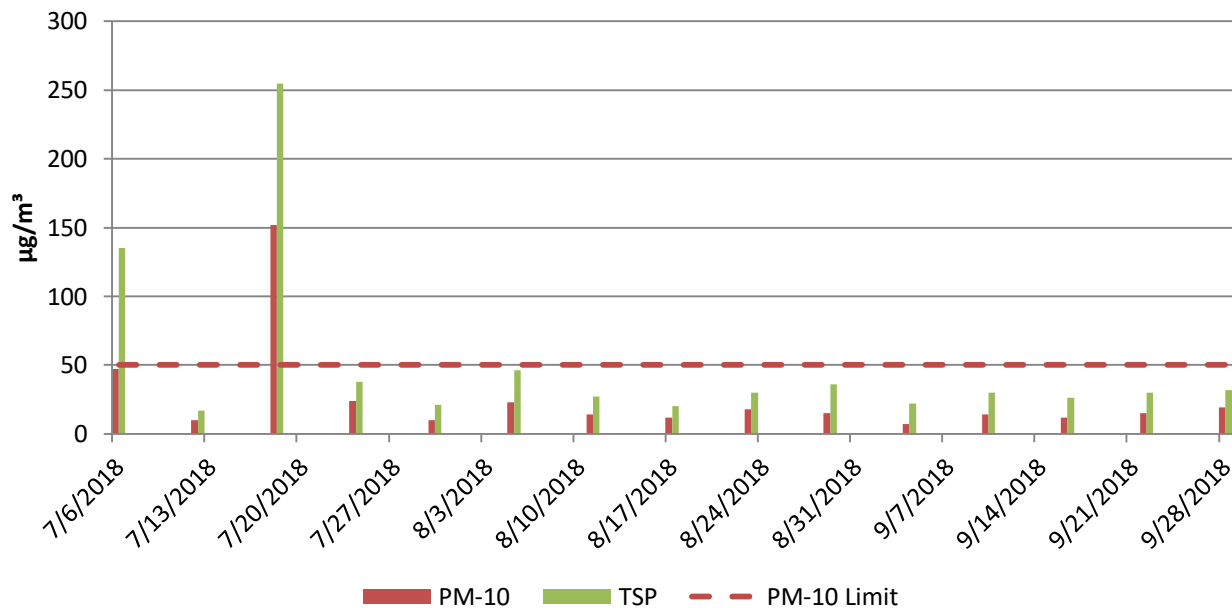


Night time period = 10pm to 7am Monday to Saturday, all day Sunday and Public Holidays

Hera Mine

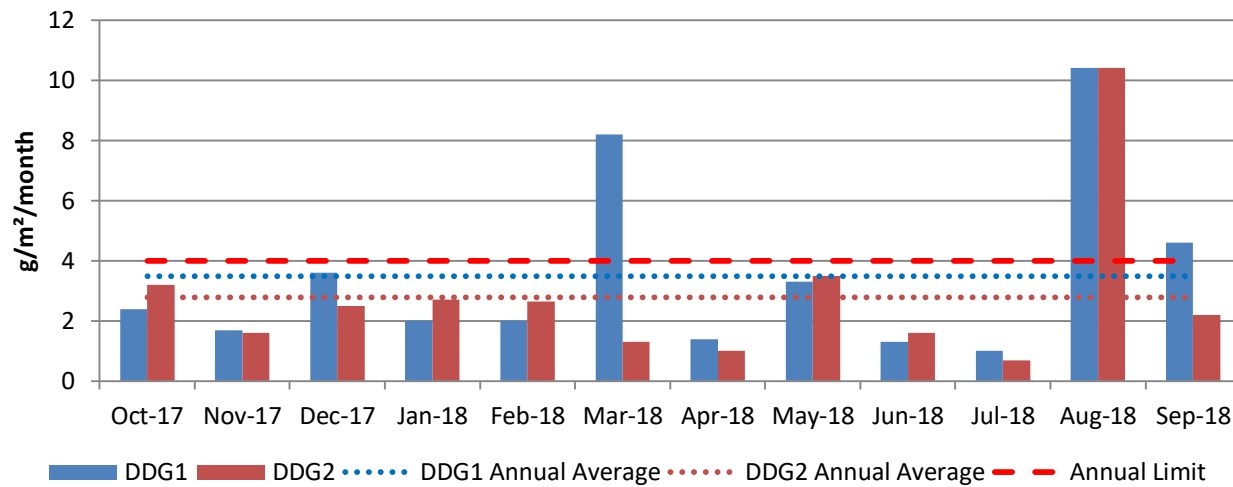
Environmental Monitoring — Jul 18 to Sep 18

Jul to Sep 18 - High Volume Air Sampler

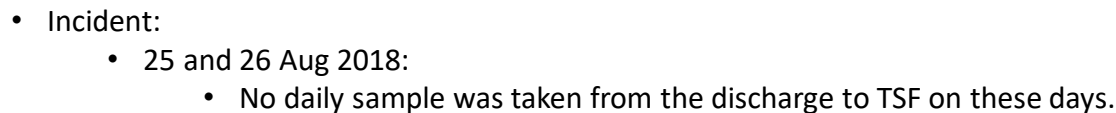


18 Jul 2018 – Dust incident most likely caused by background dust conditions. Dust conditions in NSW highest of record for the month of July

Dust Deposition Gauges



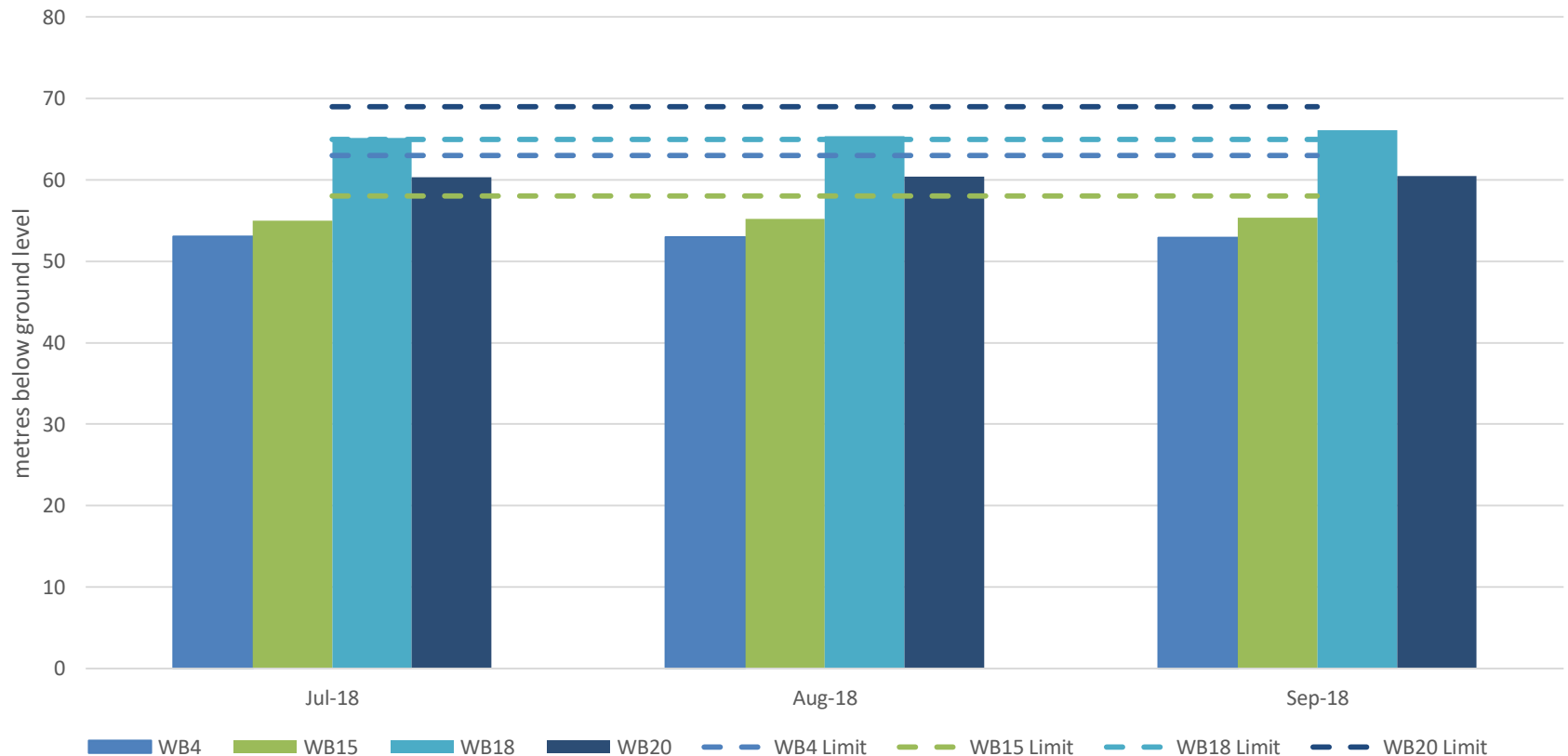
PWD & TSF WAD Cyanide - Jul to Sep 18



Hera Mine

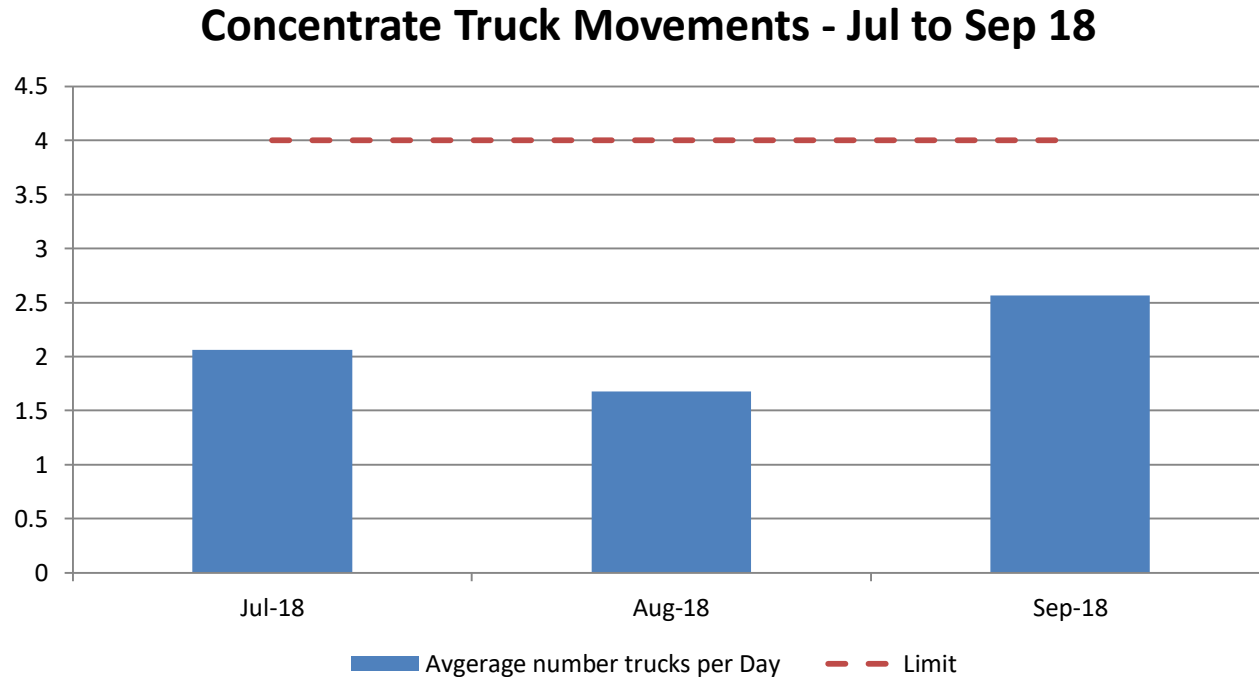
Environmental Monitoring — Apr 18 to Jun 18

Standing Water Levels - Jul to Sep 18

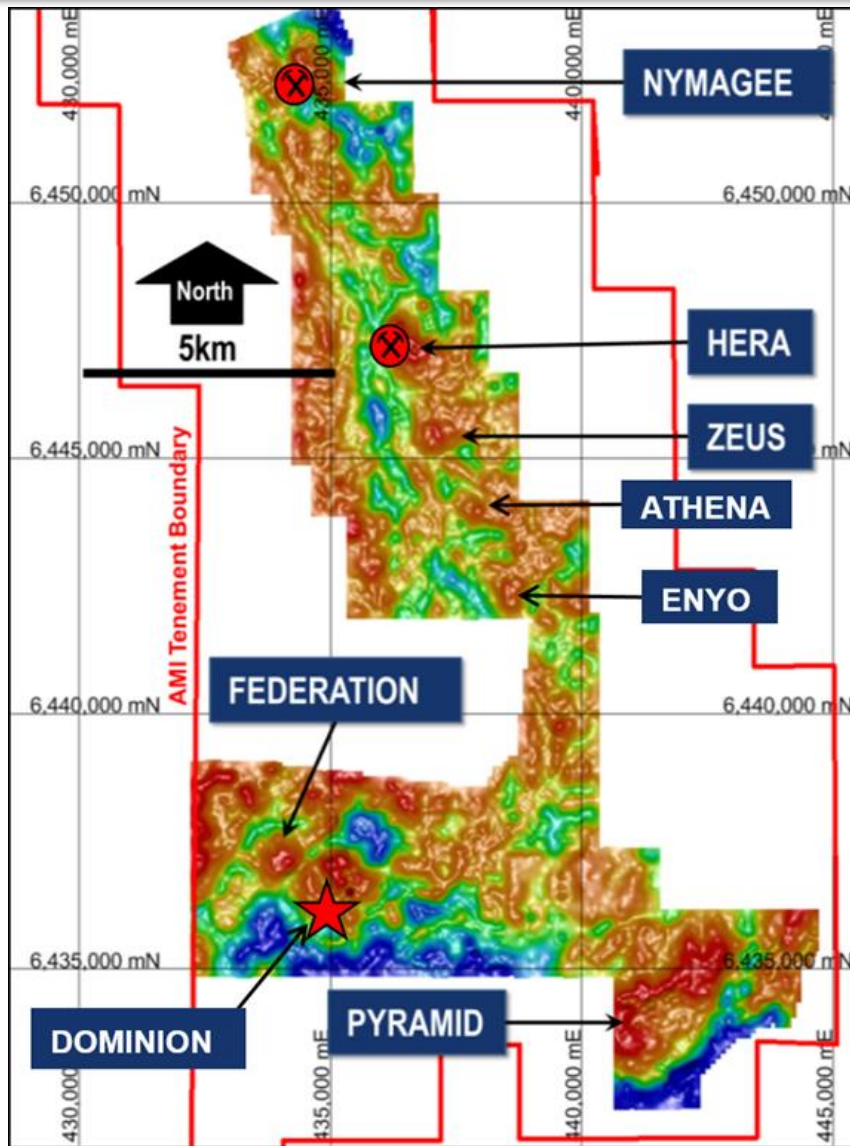


WB18 standing water level is currently under investigation to determine if the drop in water level has been caused by operations, the drought or a combination of both.

Concentrate Truck Movements



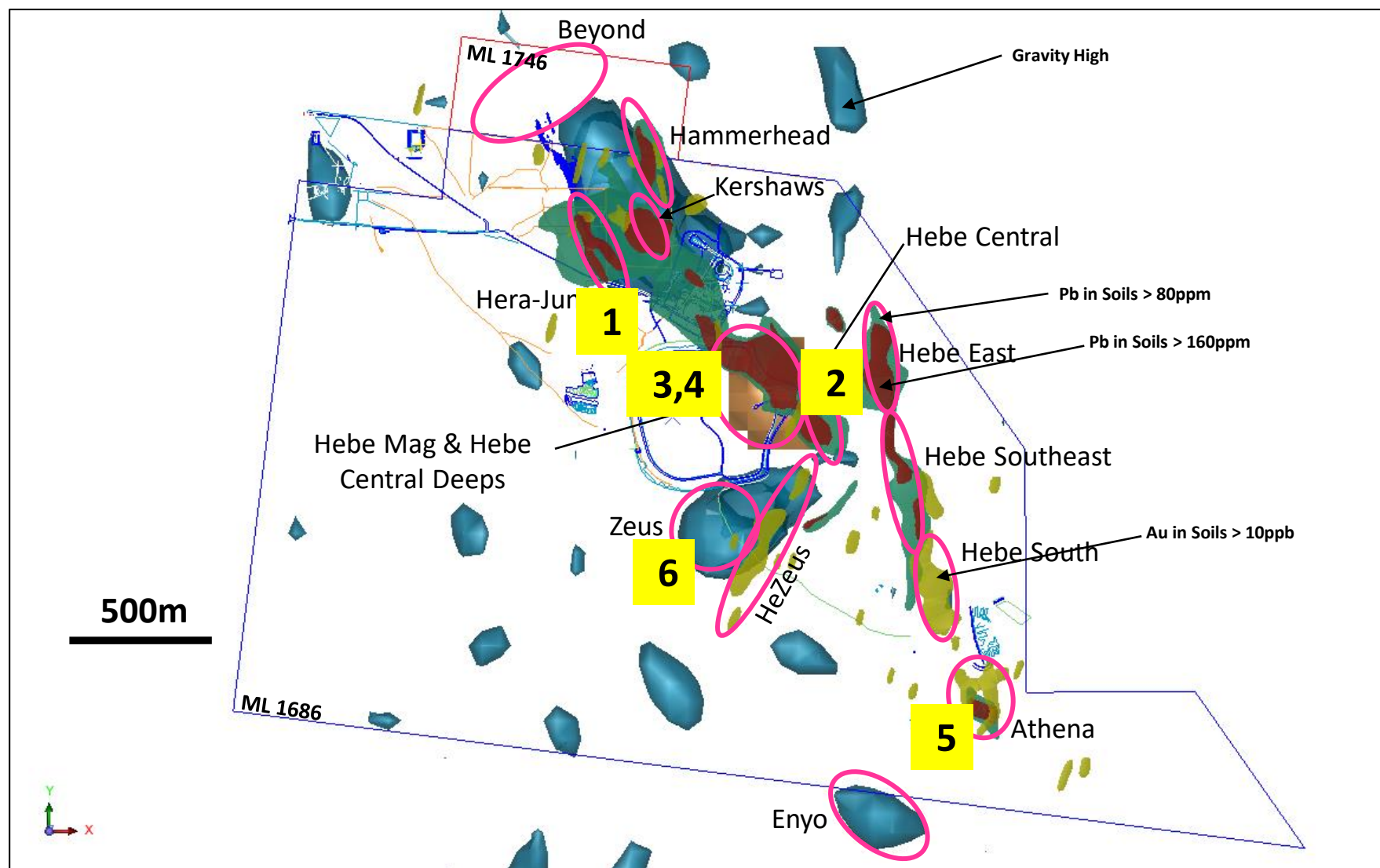
Hera Exploration Update



- Strong positive gravity anomalies at Hera and Nymagee
- Probably related to broad alteration systems around mineralisation
- Strong NNW-SSE trend over 15km strike
- Anomalies to the south have coincident geochemical responses
- Ground between Hera and Nymagee poorly explored, negligible drilling

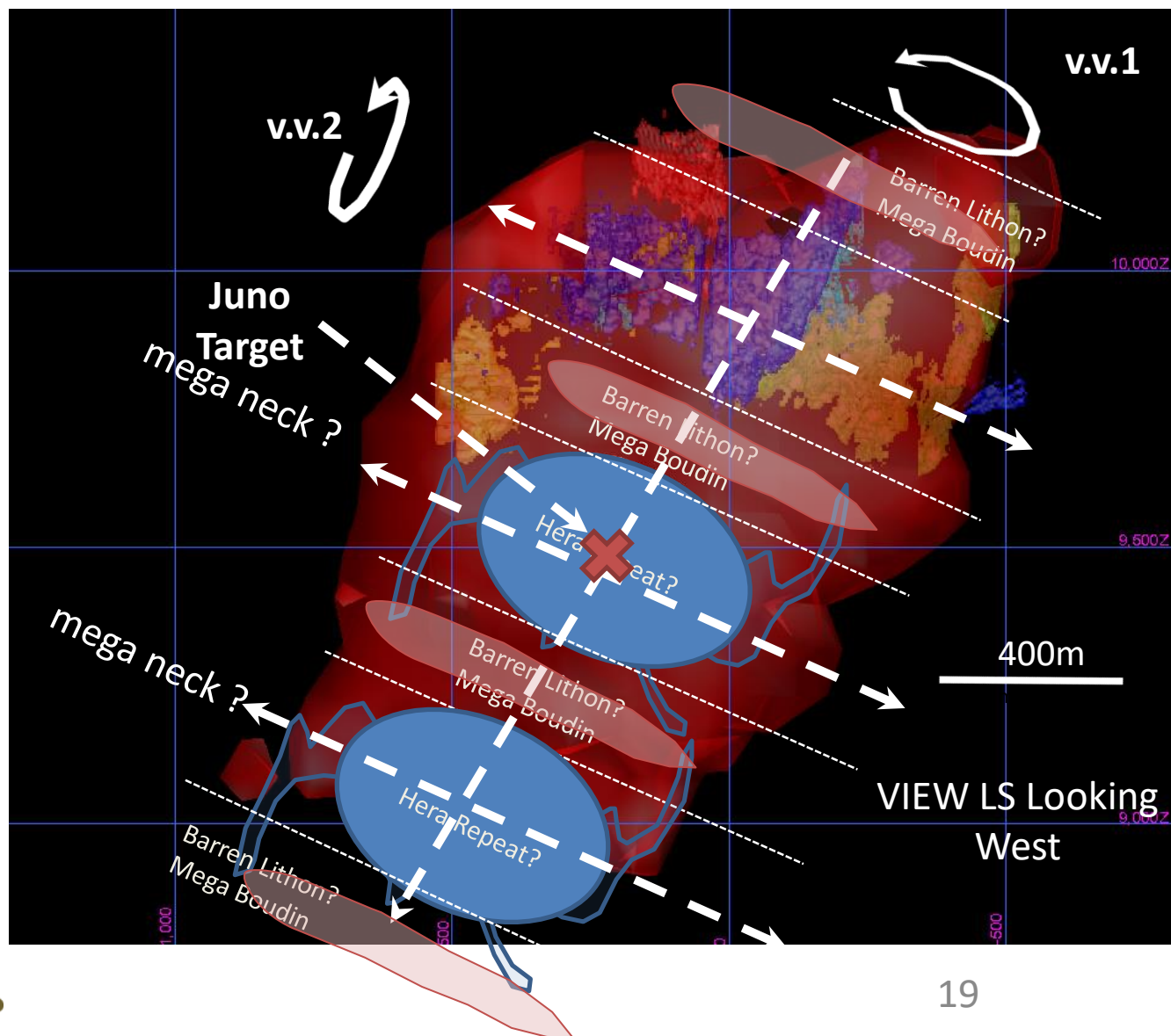
Hera Surface Exploration

NEAR MINE TARGETS



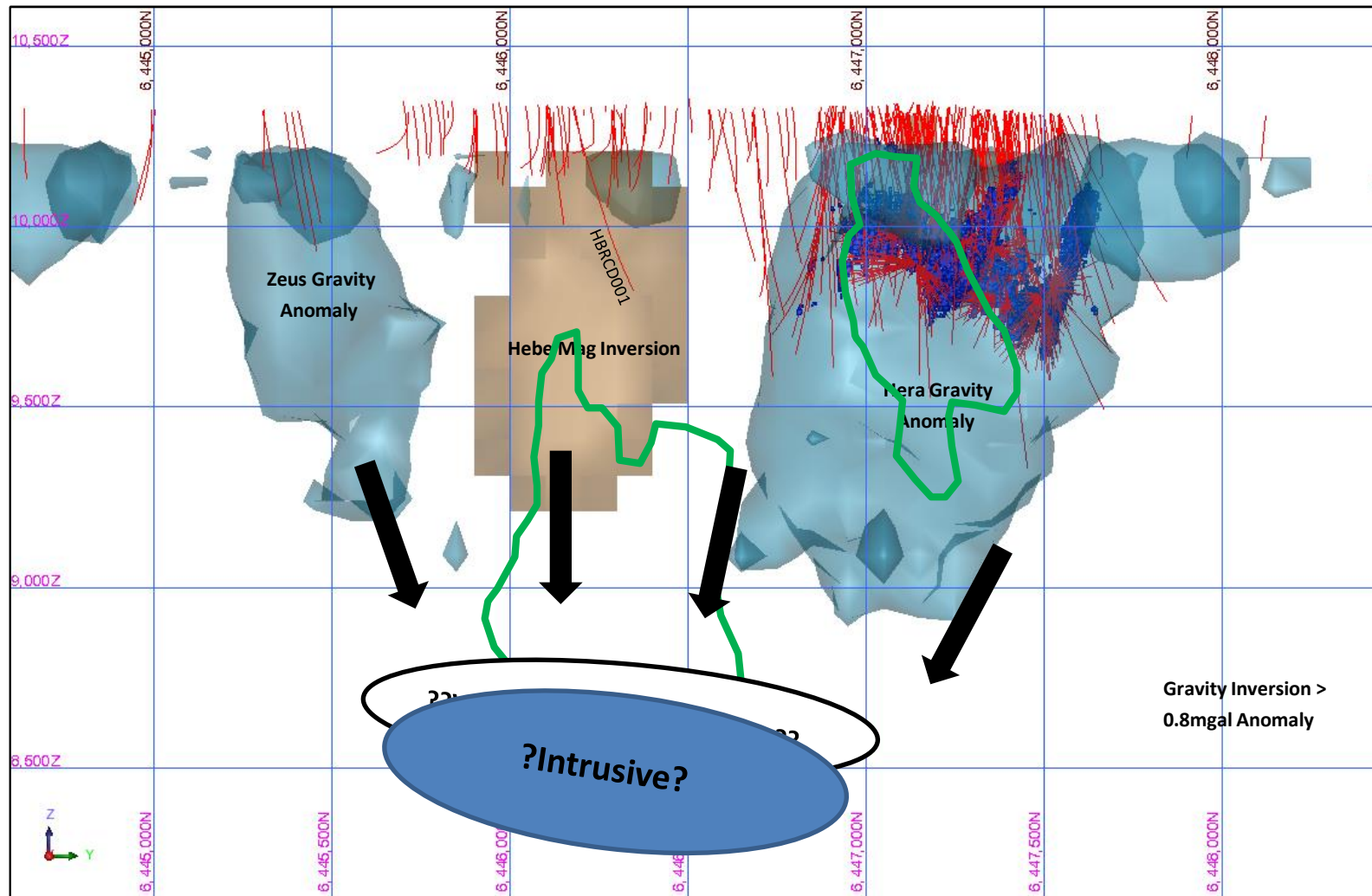
Hera Surface Exploration

JUNO TARGET — DOES HERA REPEAT AT DEPTH?



Hera Surface Exploration

NEAR MINE TARGETS



Hebe Prospect - Plan



Dominion Prospect

SEPTEMBER 2018 DRILLING — RESULTS TO DATE

- Colours represent type of ore; orange for oxidised, light blue for transitional, and dark blue for primary.
- A rough Au equivalent based on prices only is included

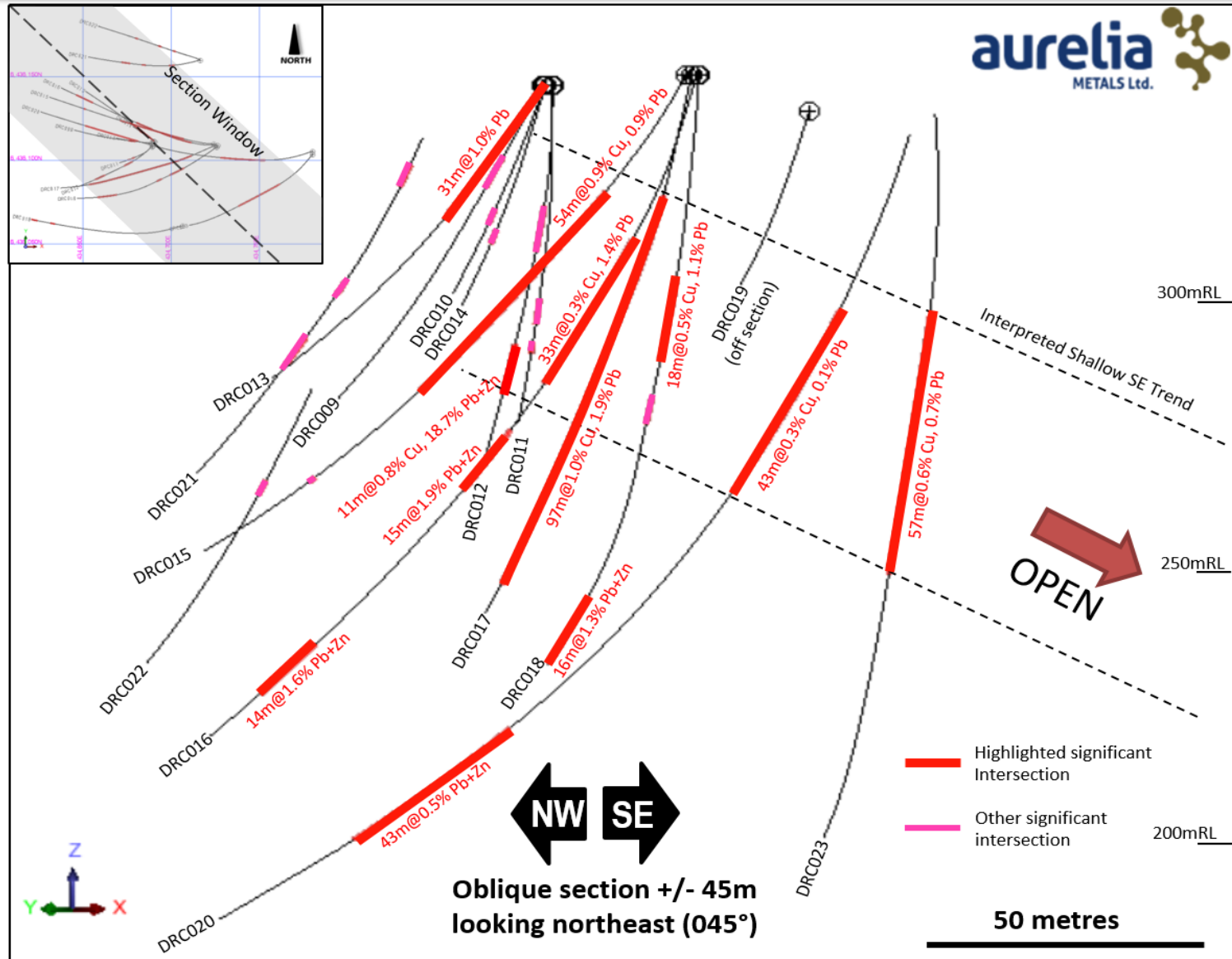
Key Intercepts:

- Multiple, broad, near-surface intercepts returned including:
 - 97 metres at 1.0% Cu, 2.4% Pb+Zn, 8g/t Ag, 0.14g/t Au
 - 54 metres at 0.9% Cu, 0.9% Pb+Zn, 6g/t Ag, 0.08g/t Au
 - 57 metres at 0.6% Cu, 0.8% Pb+Zn, 2g/t Ag, 0.08g/t Au
 - 33 metres at 0.3% Cu, 1.5% Pb+Zn, 4g/t Ag, 0.04g/t Au
 - 11 metres at 0.8% Cu, 18.7% Pb+Zn, 20g/t Ag, 0.25g/t Au

Hole ID	Intercept	Cu %	Pb %	Zn %	Au g/t	Ag g/t	From (m)	Min. Style
DRC009	7	0.2	1.9	0.2	0.23	2	17	Supergene
DRC010	3	0.2	1.1	0.2	0.09	7	27	Supergene
DRC011	5	4.7	0.1	0.3	0.37	9	44	Supergene
	2	1.8	0.5	0.1	0.10	1	53	Supergene
DRC012	10	0.1	0.6	0.1	0.08	6	28	Supergene
	11	0.8	16.9	1.8	0.25	20	60	Supergene
	includes 5	1.4	34.5	2.9	0.49	41	61	Supergene
DRC013	31	0.1	1.0	0.1	0.04	0	0	Supergene
	includes 4	0.3	5.7	0.3	0.21	1	22	Supergene
DRC014	3	3.1	0.6	0.3	0.19	33	30	Supergene
DRC015	54	0.9	0.9	0.1	0.08	6	29	Supergene
	includes 6	7.5	5.1	0.1	0.52	47	58	Supergene
	1	1.0	0.3	1.2	0.09	4	110	Transitional
DRC016	33	0.3	1.4	0.1	0.04	4	36	Supergene
	includes 8	0.2	4.8	0.1	0.05	11	38	Supergene
	and 11	0.7	0.4	0.5	0.04	2	52	Supergene
	15	0.1	0.6	1.3	0.01	2	80	Transitional
	includes 2	0.5	3.8	7.9	0.03	7	93	Transitional
DRC017	14	0.0	0.8	0.8	0.01	1	136	Sulphide
	97	1.0	1.9	0.5	0.14	8	28	Supergene
	includes 9	0.6	5.1	0.5	0.31	4	40	Supergene
	and 17	3.9	5.5	0.5	0.46	26	70	Supergene
DRC018	and 4	3.1	4.2	6.4	0.25	37	96	Transitional
	18	0.5	1.1	0.4	0.19	1	46	Supergene
	includes 7	0.9	2.2	1.0	0.45	1	49	Supergene
	6	0.4	0.0	0.0	0.04	1	73	Supergene
DRC019	16	0.1	0.8	0.5	0.02	1	121	Transitional
	3	0.0	0.1	0.5	0.00	0	113	Sulphide
DRC020	4	0.0	0.0	0.8	0.00	1	126	Sulphide
	includes 43	0.3	0.1	0.0	0.02	1	53	Supergene
	6	1.0	0.1	0.0	0.05	2	54	Supergene
	38	0.0	0.1	0.4	0.01	0	163	Sulphide
DRC021	includes 6	0.1	0.6	0.9	0.01	1	195	Sulphide
	5	0.1	0.9	0.1	0.02	1	28	Supergene
	3	0.3	4.4	0.2	0.06	5	56	Supergene
DRC022	7	0.2	6.3	0.1	0.06	10	70	Supergene
	3	0.1	0.6	0.0	0.0	1	40	Supergene
	4	0.6	0.2	0.1	0.0	3	61	Supergene
DRC023	3	0.0	0.2	0.4	0.01	0	93	Sulphide
	includes 57	0.6	0.7	0.1	0.08	2	53	Supergene
	10	0.8	3.7	0.4	0.18	1	74	Supergene
	and 13	1.1	0.0	0.1	0.13	4	90	Transitional

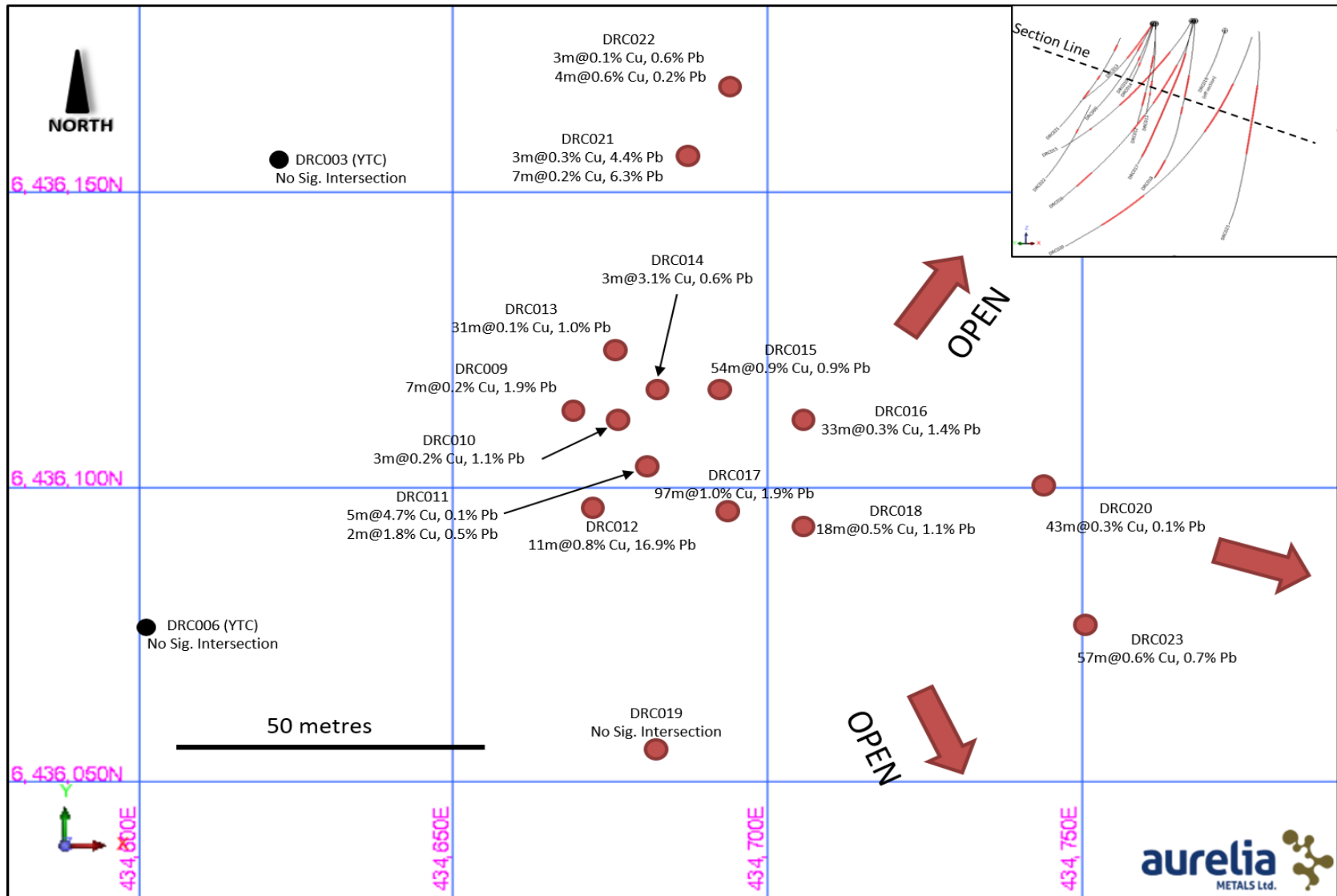
Dominion Prospect

SEPTEMBER 2018 DRILLING - RESULTS



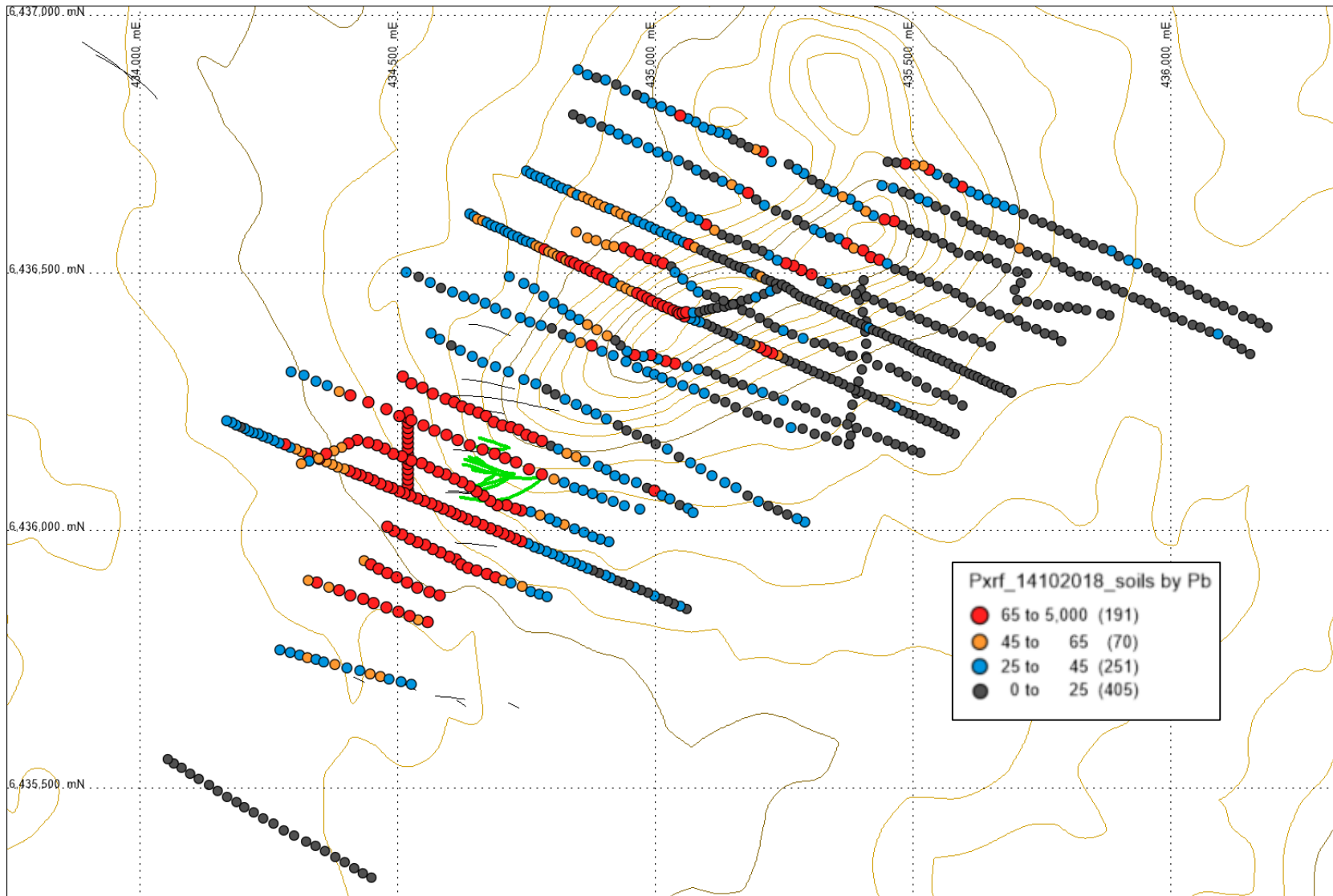
Dominion Prospect

SEPTEMBER 2018 DRILLING - RESULTS



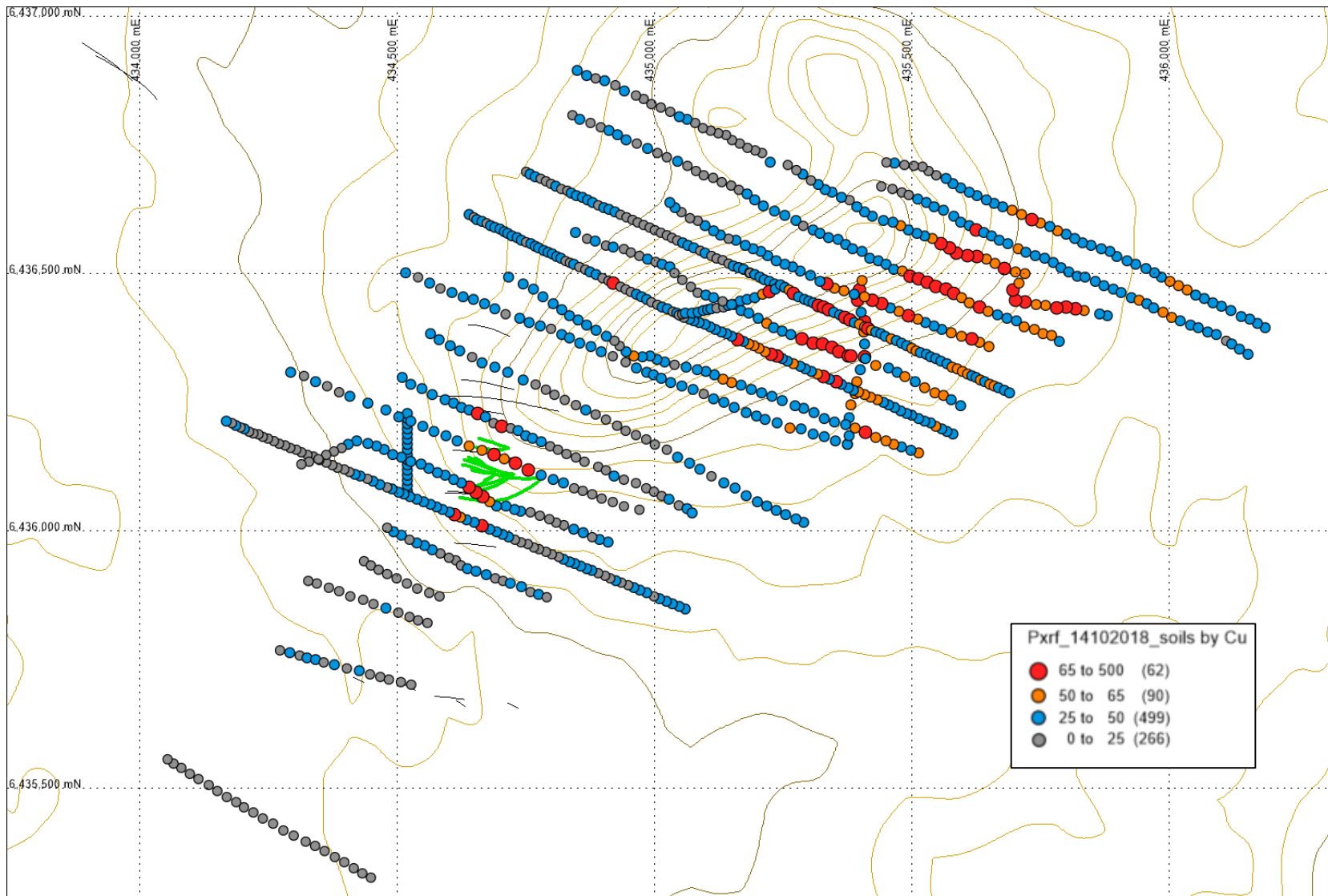
Dominion Prospect

XRF SOIL GEOCHEMISTRY - LEAD

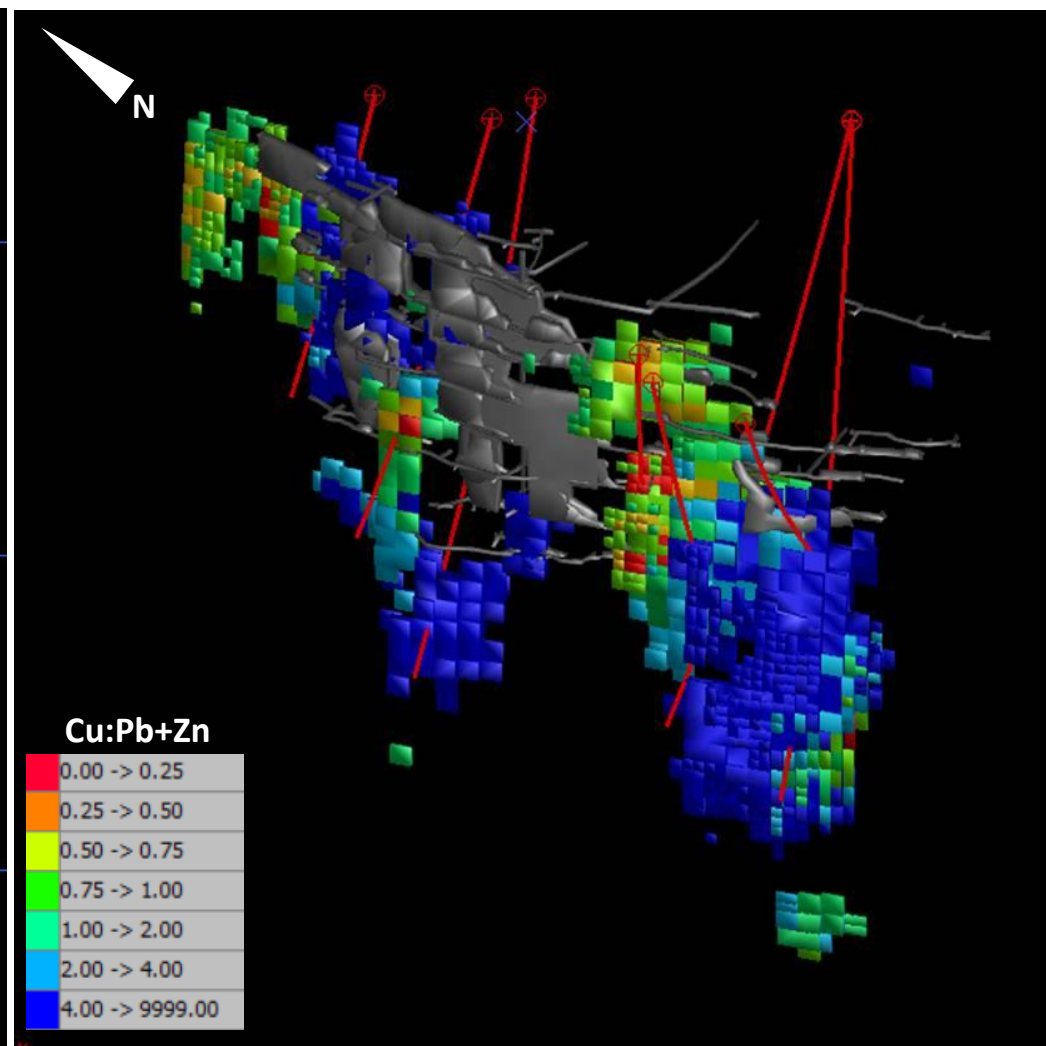
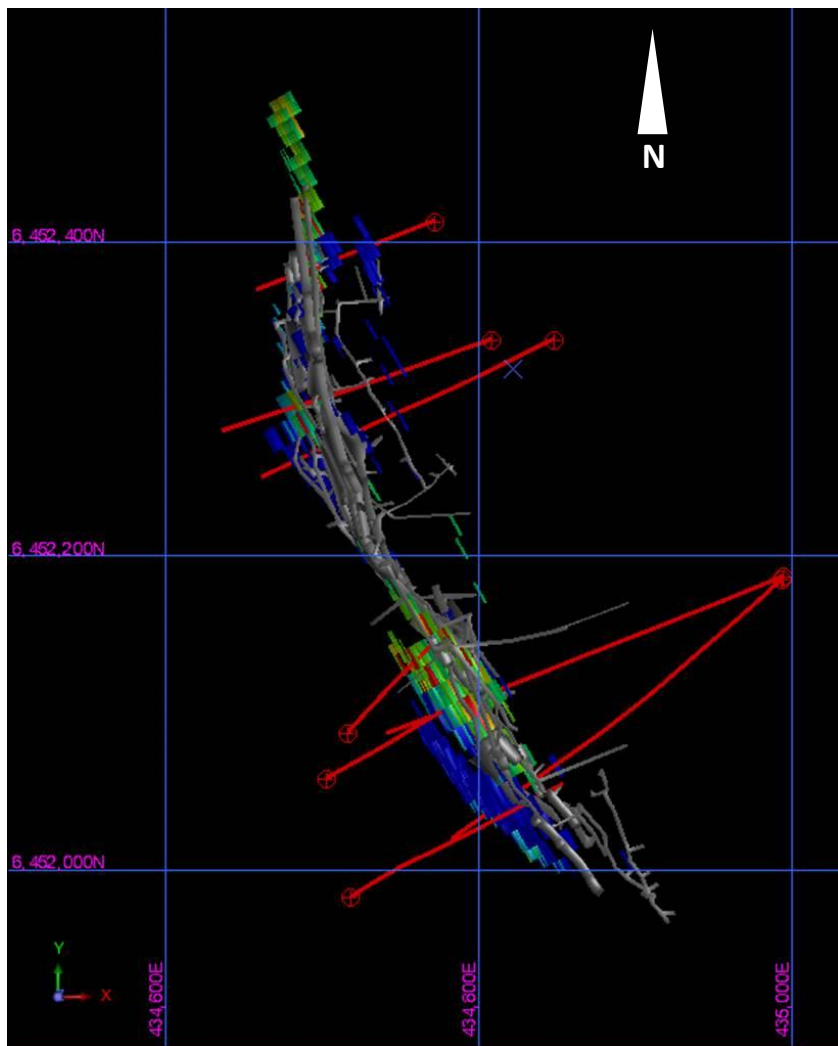


Dominion Prospect

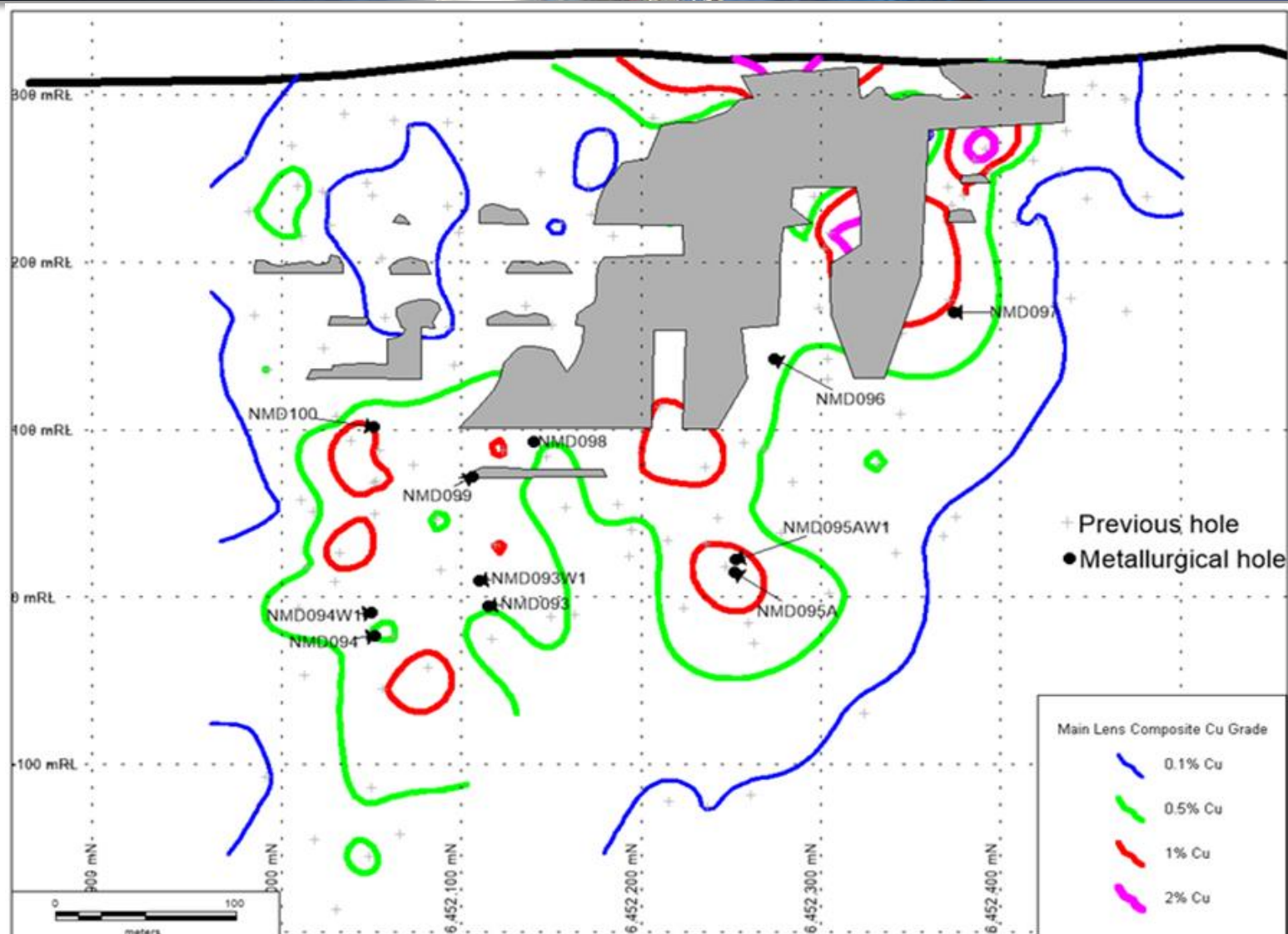
XRF SOIL GEOCHEMISTRY - COPPER



Nymagee Mine — Metallurgy Drill Program Update



Nymagee Mine — Metallurgy Drill Program Update





Long section showing the location of the metallurgical hole intercepts at Nymagee

Nymagee Mine — Metallurgy Drill Results

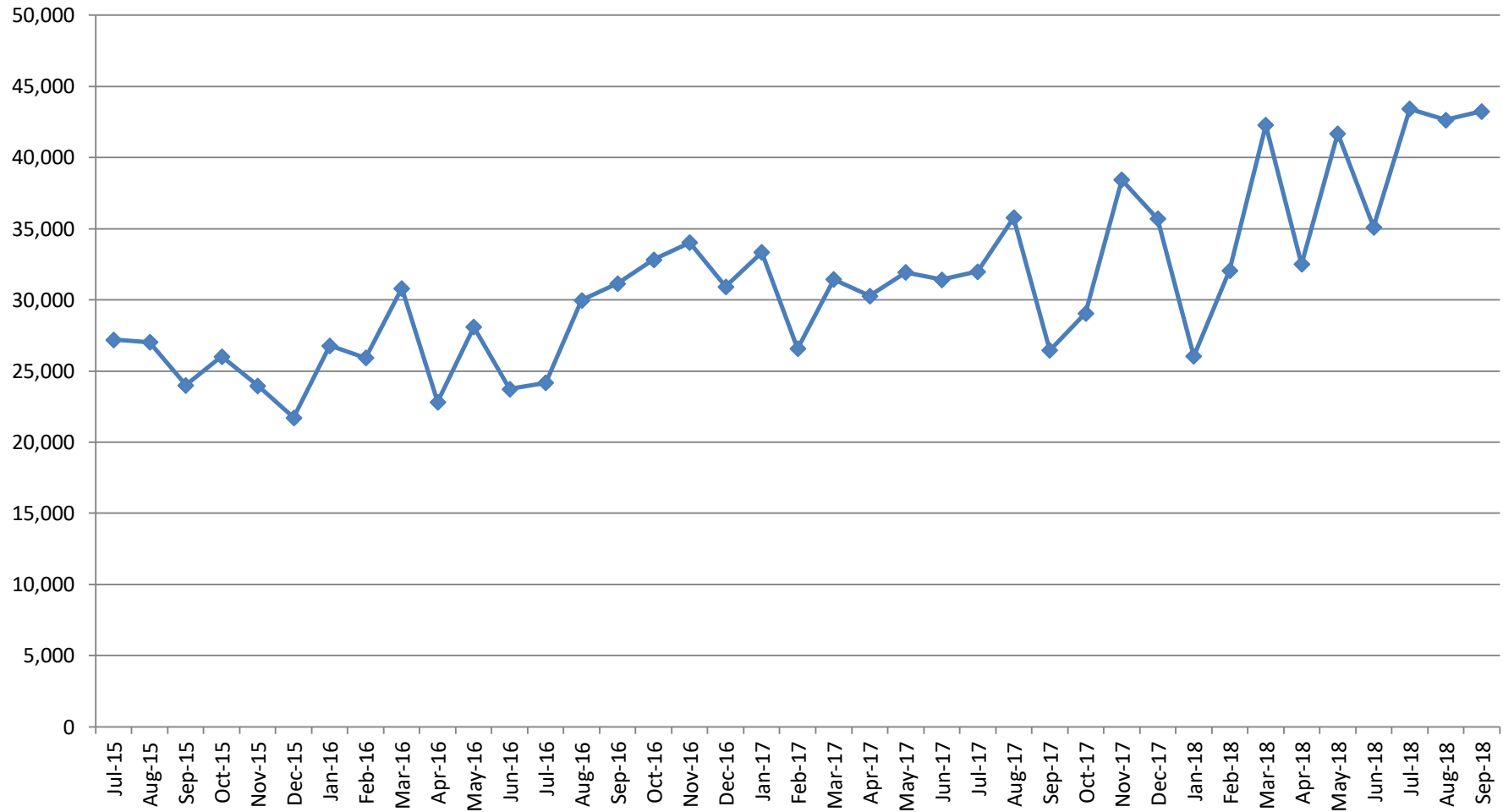
Hole	Interval (m)	Cu %	Pb %	Zn %	Ag g/t	Au g/t	From (m)	NSR (Resource)	NSR Short (Current)
NMD093	22	0.6	0.0	0.1	3	0.2	396	48	45
including	6	1.1	0.0	0.1	3	0.5	411	93	86
NMD093W1	18	1.0	0.0	0.1	5	0.1	375	70	65
including	3	2.2	0.0	0.1	12	0.1	375	147	136
and	3	2.1	0.0	0.1	7	0.2	385	146	135
NMD094	19	3.2	0.0	0.0	10	0.0	268	203	187
including	8	4.5	0.0	0.0	17	0.0	275	291	268
	8	3.0	0.3	0.4	18	0.0	422	208	193
	13	2.4	0.1	0.2	15	0.1	443	161	148
including	6	3.9	0.1	0.3	26	0.2	447	263	243
NMD094W1	18	2.4	0.0	0.1	8	0.0	274	156	144
including	9	4.1	0.0	0.0	14	0.0	276	261	240
	3	1.9	0.1	0.1	5	0.0	365	122	113
	18	5.5	0.1	0.1	22	0.1	421	355	327
including	5	9.4	0.1	0.2	32	0.2	427	606	558
NMD095A	35.2	4.1	0.0	0.0	17	0.1	325	268	247
including	8.8	10.5	0.0	0.1	39	0.2	347.2	679	624
NMD095AW1	29	2.9	0.0	0.1	12	0.1	316	188	173
including	6.2	8.0	0.0	0.1	36	0.2	335.8	520	478
NMD096	14	2.5	0.0	0.1	9	0.1	197	162	149
including	5	4.3	0.0	0.1	15	0.1	201	274	253
	3	0.3	1.7	4.1	16	0.0	224.5	114	115
	3	0.6	0.7	2.7	21	0.3	240	117	114
NMD097	11	1.2	0.0	0.1	9	0.1	154	84	77
	11	1.7	0.0	0.1	7	0.1	172	111	102
	6	0.1	0.9	2.5	10	0.0	188	68	69
NMD098	27	0.3	3.4	6.6	28	0.0	208	185	186
including	7	0.6	8.0	15.4	63	0.0	208	426	429
and	10	0.1	2.7	5.3	22	0.1	221	146	147
NMD099	6	0.5	5.2	11.8	49	0.0	225	317	321
	5.3	0.4	1.1	1.8	8	0.1	249	76	74
	12	2.5	0.1	0.2	12	0.1	266	166	153
including	7	3.6	0.0	0.1	13	0.1	270.3	235	217
NMD100	13	2.9	0.7	1.4	20	0.1	220	219	205
including	2	0.7	4.4	8.3	33	0.0	220	253	254
and	6	4.5	0.1	0.2	20	0.1	224	295	271

Hera Processing Performance

Traffic Light KPI Scorecard - Monthly

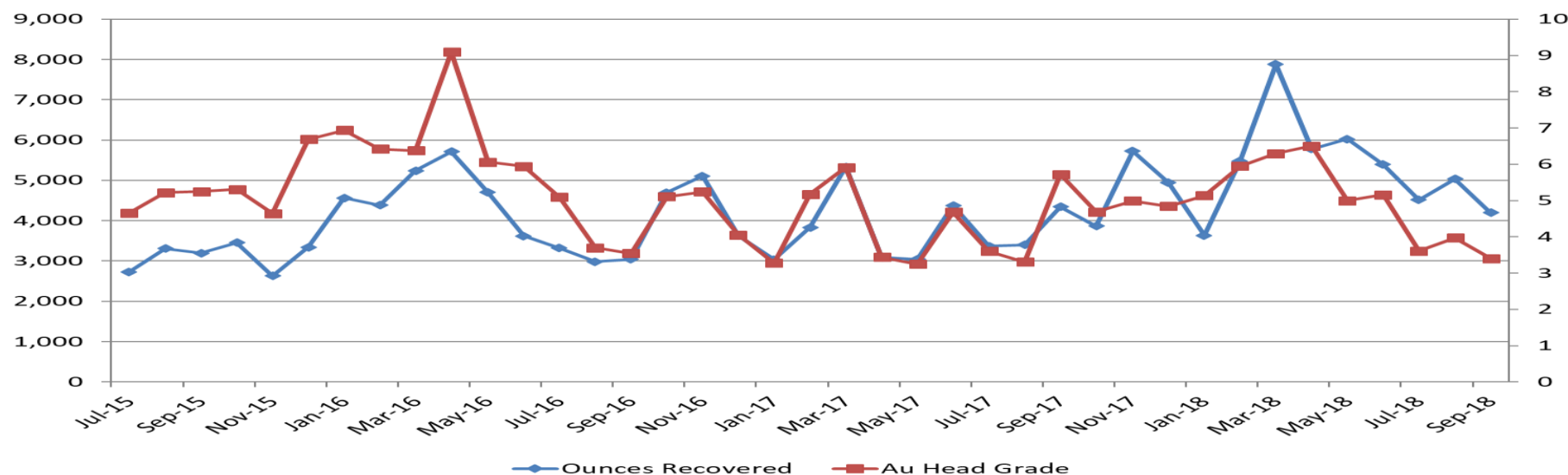
Hera - Sep-18 - KPI Scorecard		Month Actual	Month Budget	YTD Actual	YTD Budget
Safety (TRIFR)		17	20	17	20
Total Lateral development (m)		221	150	691	662
Total Ore Mined		40,621	38,753	126,226	121,865
Process throughput (t)		43,250	38,748	129,338	124,546
Gold grade processed (g/t)		3.40	3.09	3.66	3.34
Gold recovery (%)		88.8%	94.0%	90.3%	94.0%
Gold production (oz.)		4,199	3,619	13,746	12,568
Pb+Zn grade processed (%)		4.4%	6.9%	4.4%	5.7%
Conc production (dmt)		2,950	4,153	8,838	11,061
Conc grade (%)		56.1%	58.0%	55.5%	58.0%
Recovery - Lead		85%	90%	85%	90%
Recovery - Zinc		90%	90%	88%	90%
Production - Contained Metal - Lead		684	883	1,952	2,553
Production - Contained Metal - Zinc		971	1,526	2,956	3,863
Silica in conc (%)		3.9%	3.0%	4.2%	3.0%
Gold losses to Conc (g/t)		1.68	1.00	1.47	1.00
Total onsite cost (opex+capex) (\$/t)		122	169	134	156
Notional cash flow (after growth capita		3,456	2,831	11,236	10,252

Mill Monthly Throughput

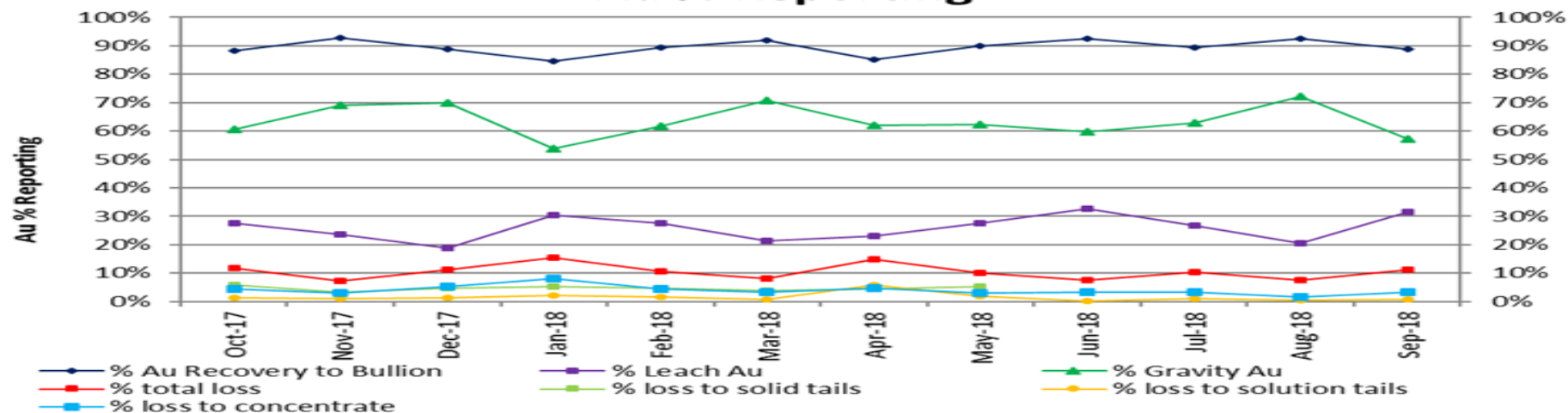


Historical Gold Performance

Ounces Recovered vs Head Grade

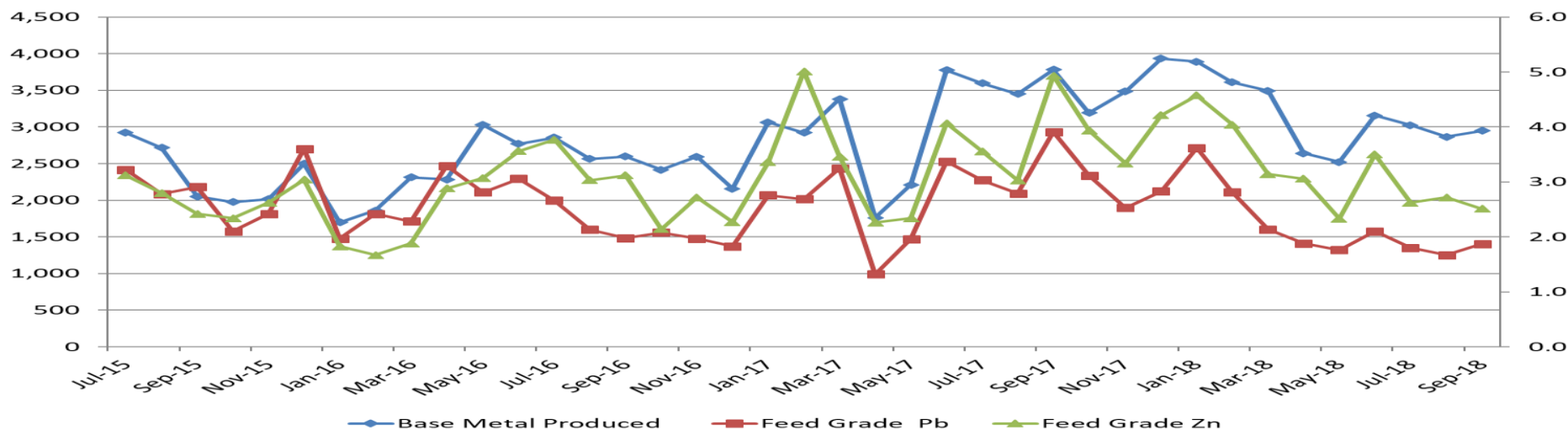


Au % Reporting

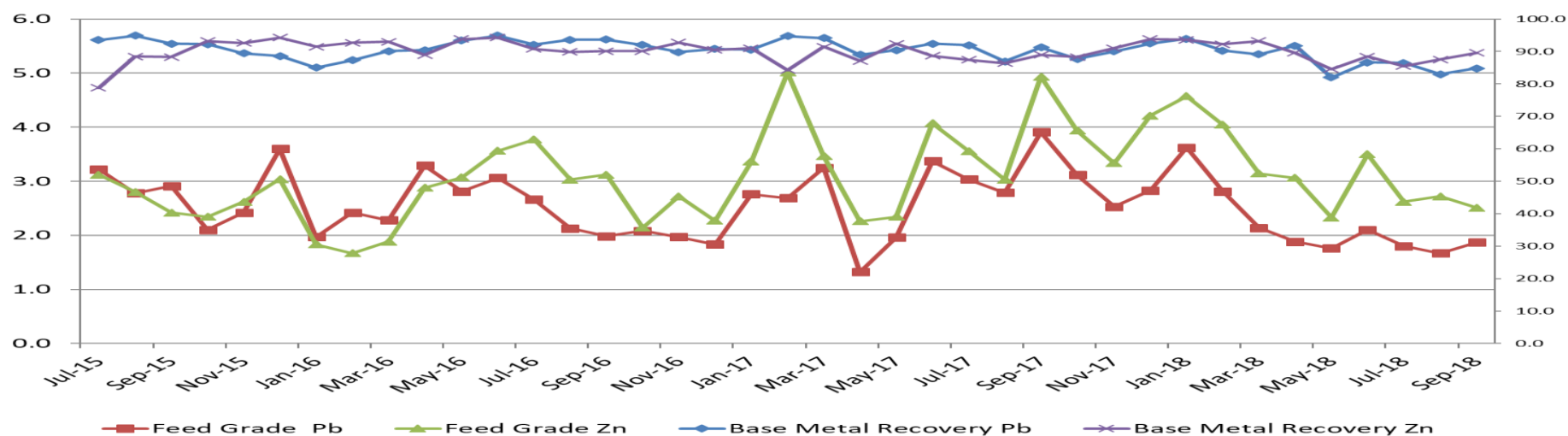


Historical Base Metals Performance

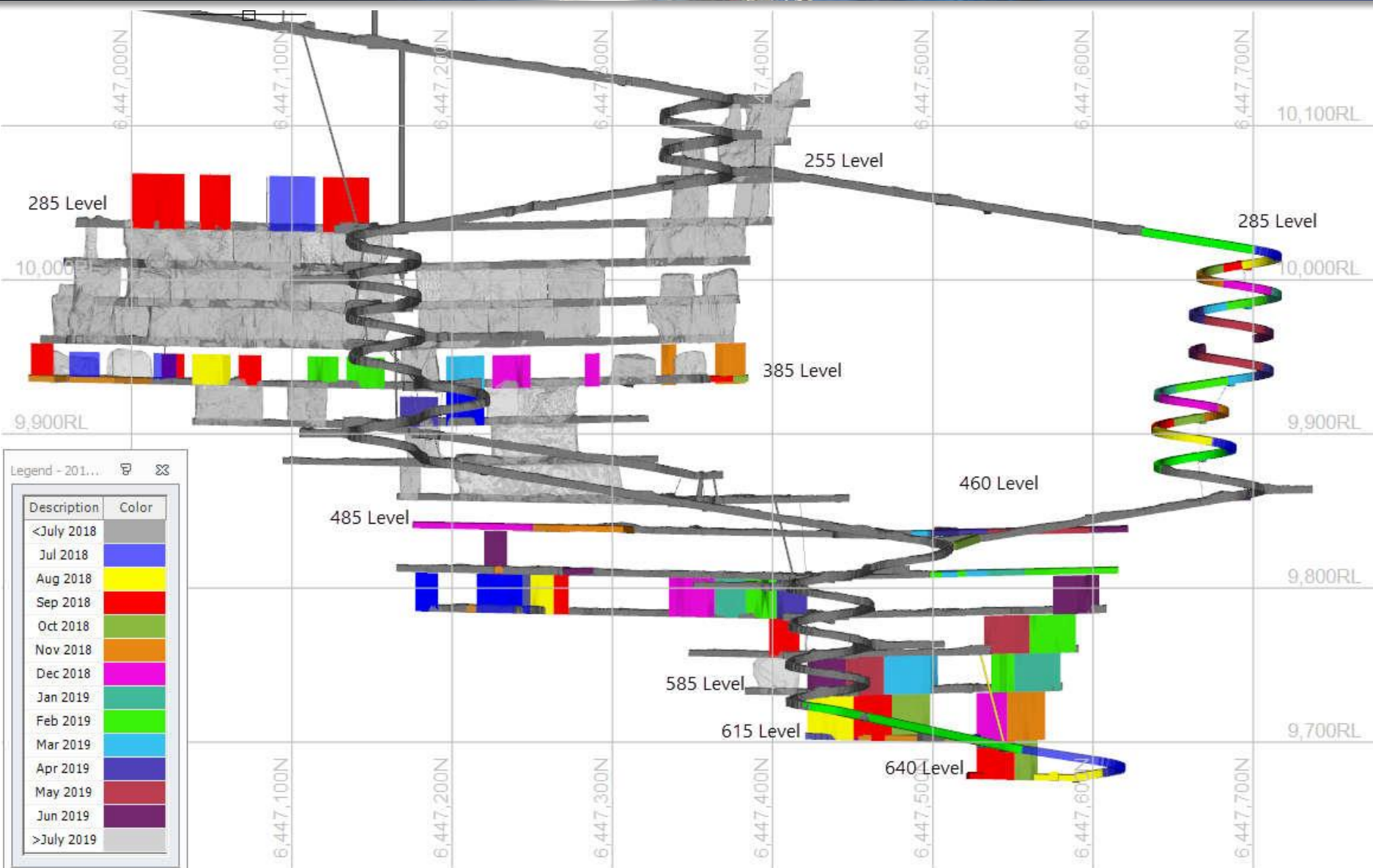
Base Metal Production vs Head Grade



Base Metal Recovery vs Head Grade



FY19 Schedule Production



Life of Mine — Four Years

