

# YTC Resources Ltd AGM Presentation

7 November 2007





## Successful ASX Listing

On 8 May 2007 YTC Resources Ltd successfully listed on ASX raising \$3.5m before expenses. These funds were added to the \$2.67m invested by strategic partner Yunnan Tin Company Group of China in March 2007.



## Aggressive exploration campaign

- 3 Geophysical surveys completed
- 5 drilling programmes completed
- Exciting results from Kadungle, Doradilla & Torrington



## Advanced Projects

Ongoing review of advanced resource projects in partnership with the Yunnan Tin Group. Project scope includes tin, non-ferrous and precious metals.

# Tin Market Outlook

- Increasing global demand and moderating supply
- Domestic Chinese tin consumption outpacing supply\*
- Internal tin trading in China to +US\$19,000/tonne\*



\* source: ITRI [www.itri.co.uk](http://www.itri.co.uk)





## Yunnan Tin Group Alliance

YTC's unique alliance with the world's largest tin producer = technical and financial advantage.



## Tenement Position

Dominant tenement holding in 3 of the 5 major tin fields in NSW. First significant exploration in 25 years.





# Project Locations

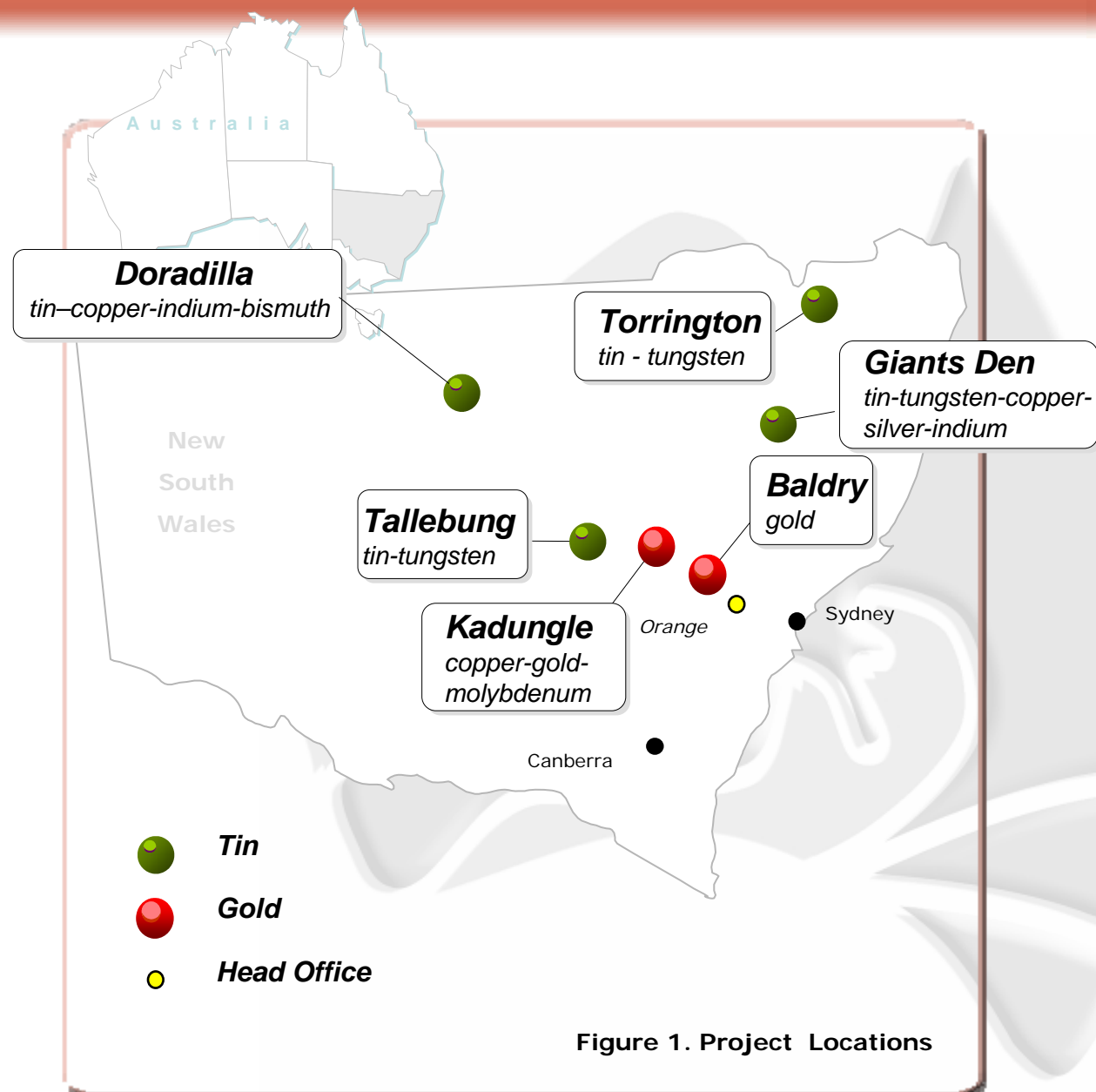
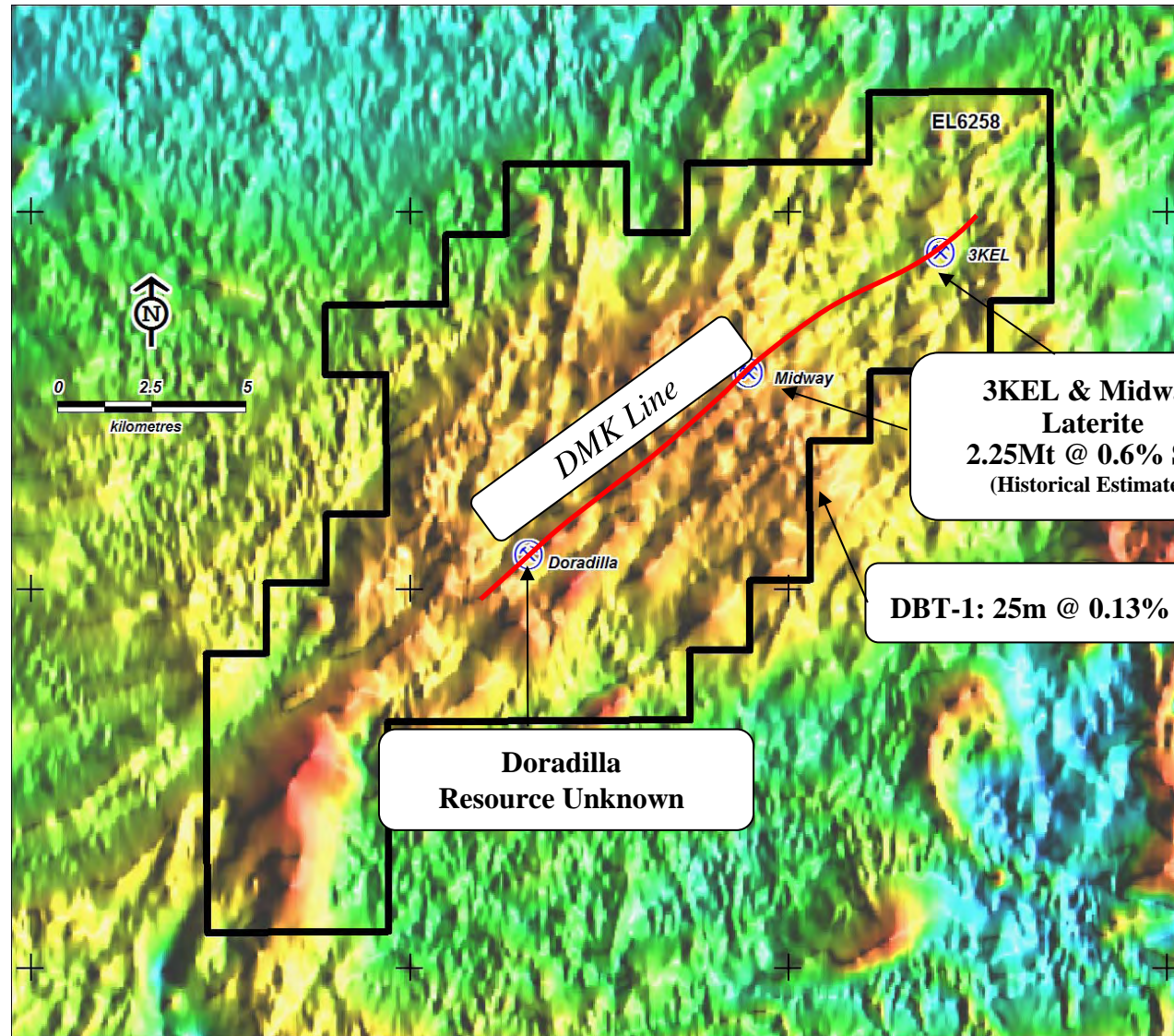


Figure 1. Project Locations



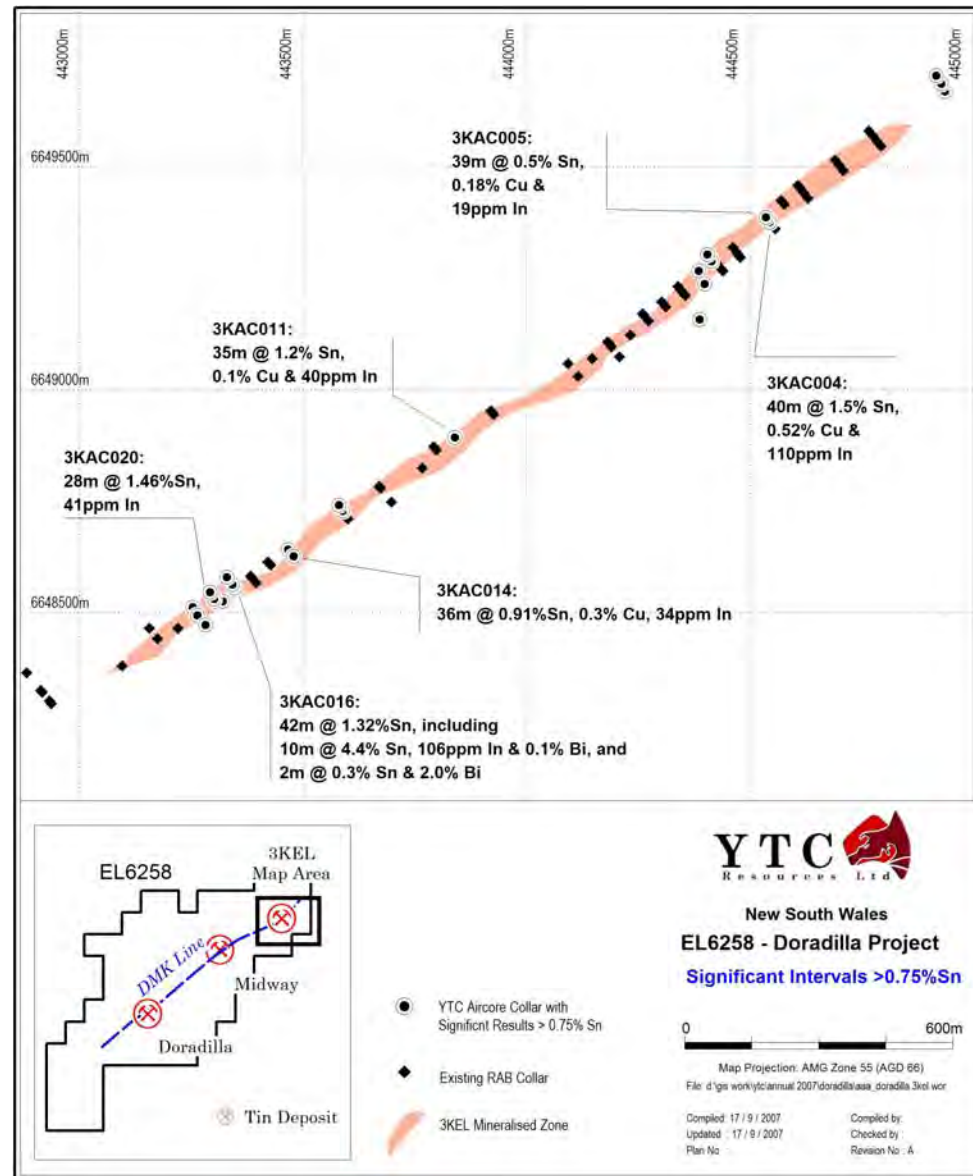
# Doradilla Project: tin







# Doradilla Project: tin

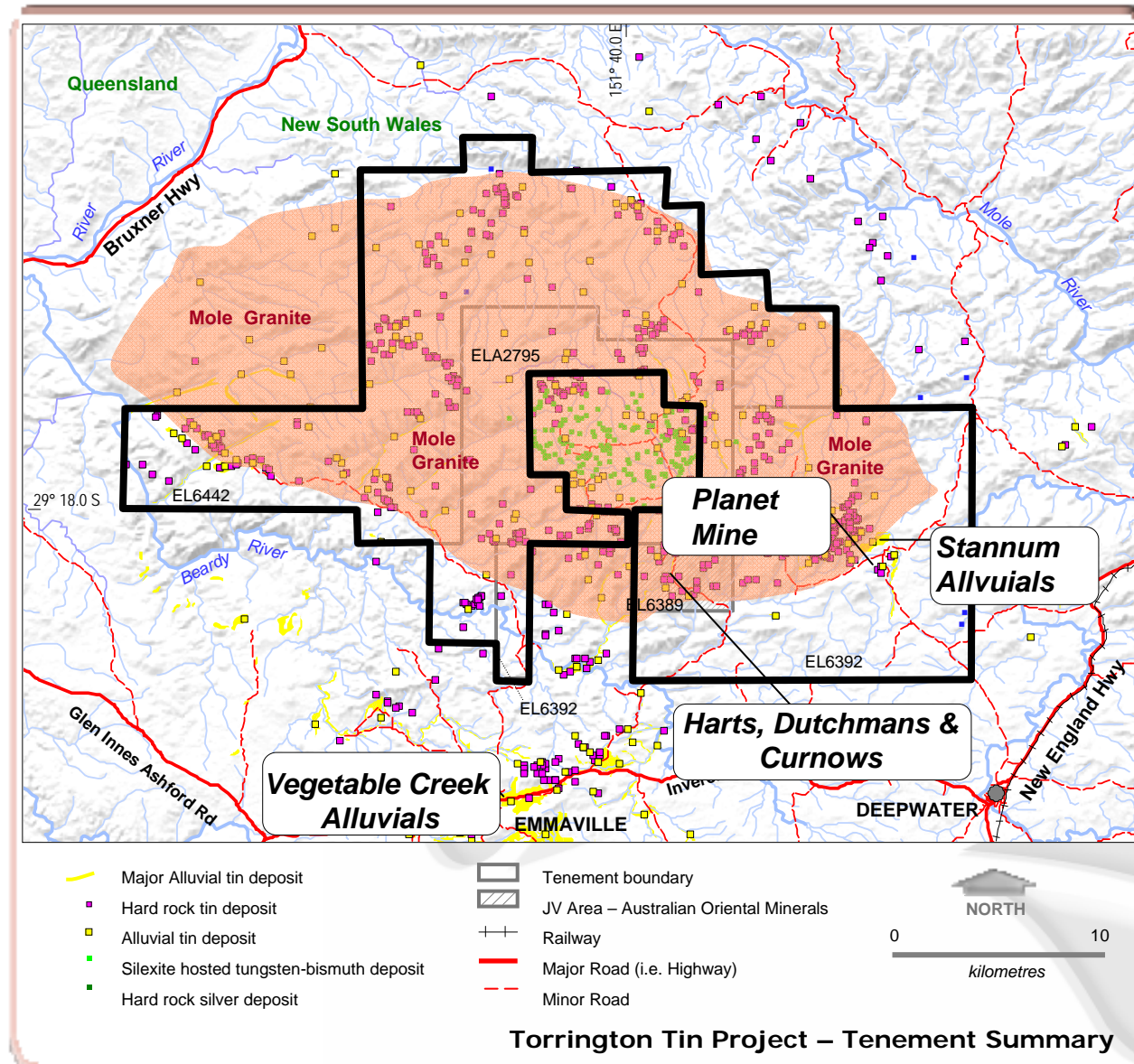




# Doradilla Project: tin

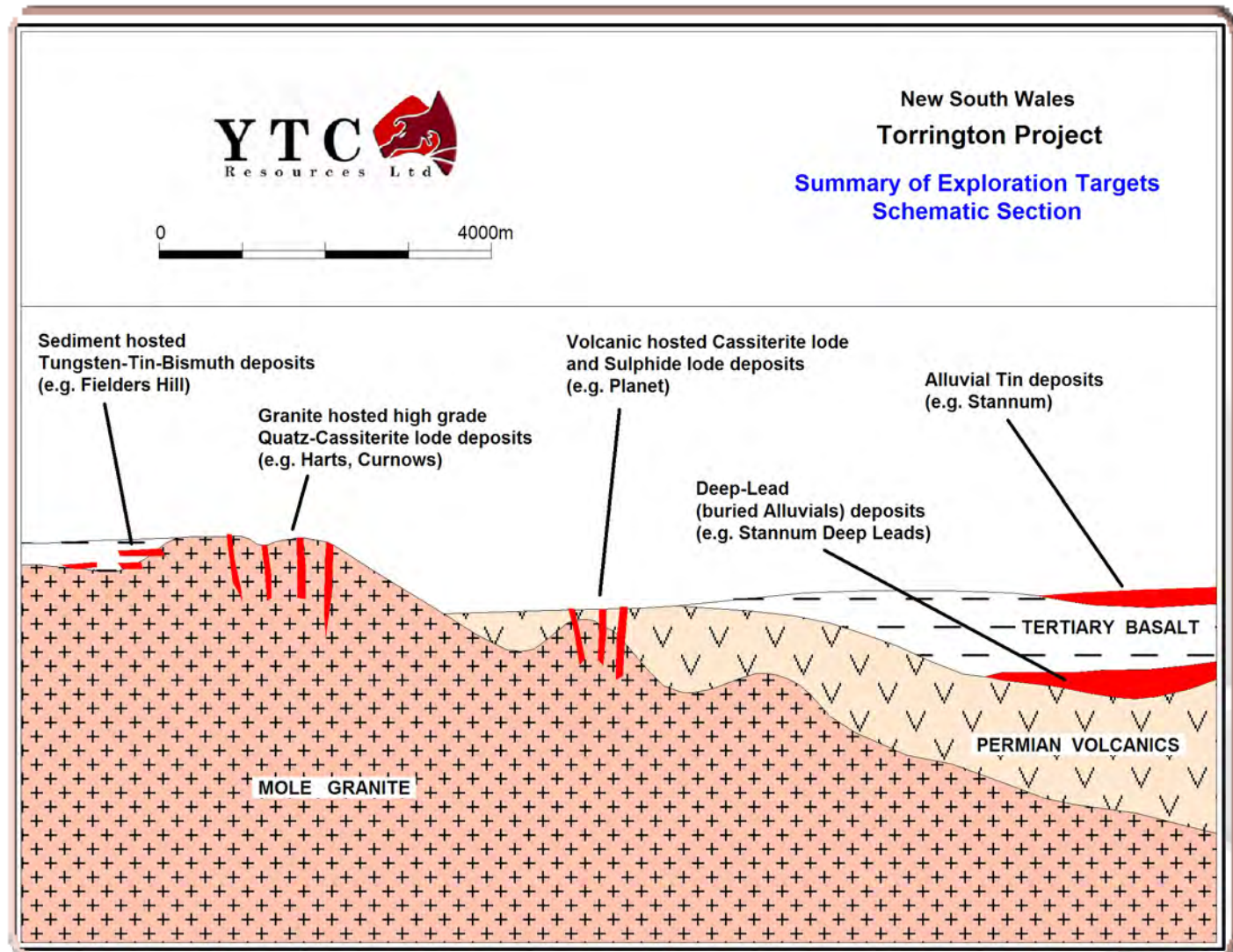
- **Option to earn a 70% interest from Templar Resources (Goldminco: TSX)**
- **Phase 1 aircore drilling programme completed**
- **Resource Consultants engaged**
  - Hellman & Schofield engaged to convert Historical Estimates at Midway & 3KEL to JORC compliant Resources.
- **Metallurgy Programme to commence**
  - Metallurgy samples from 3KEL deposit collected. Metallurgical testwork to commence in both Australia and at the Yunnan Tin Group laboratories in China.
- **Nickel potential under review**
  - Potential for 'Avebury type' nickel mineralisation hosted in serpentinites.
  - 1981 drill hole DBT1: 25m @ 0.13% Ni as nickel sulphide.

# Torrington Project: tin





# Torrington Project: tin





# Torrington Project – Planet Mine



## Rock Chip Sampling:

- Tin values to 3.2% Sn
- Silver values to 227g/t Ag
- Indium value to 859ppm In



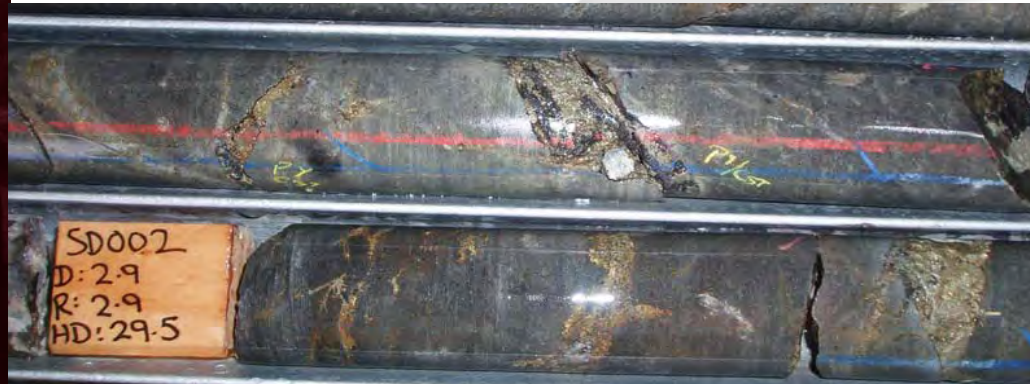
## IP Geophysics

- Very strong anomalies indicating disseminated and connected sulphides.



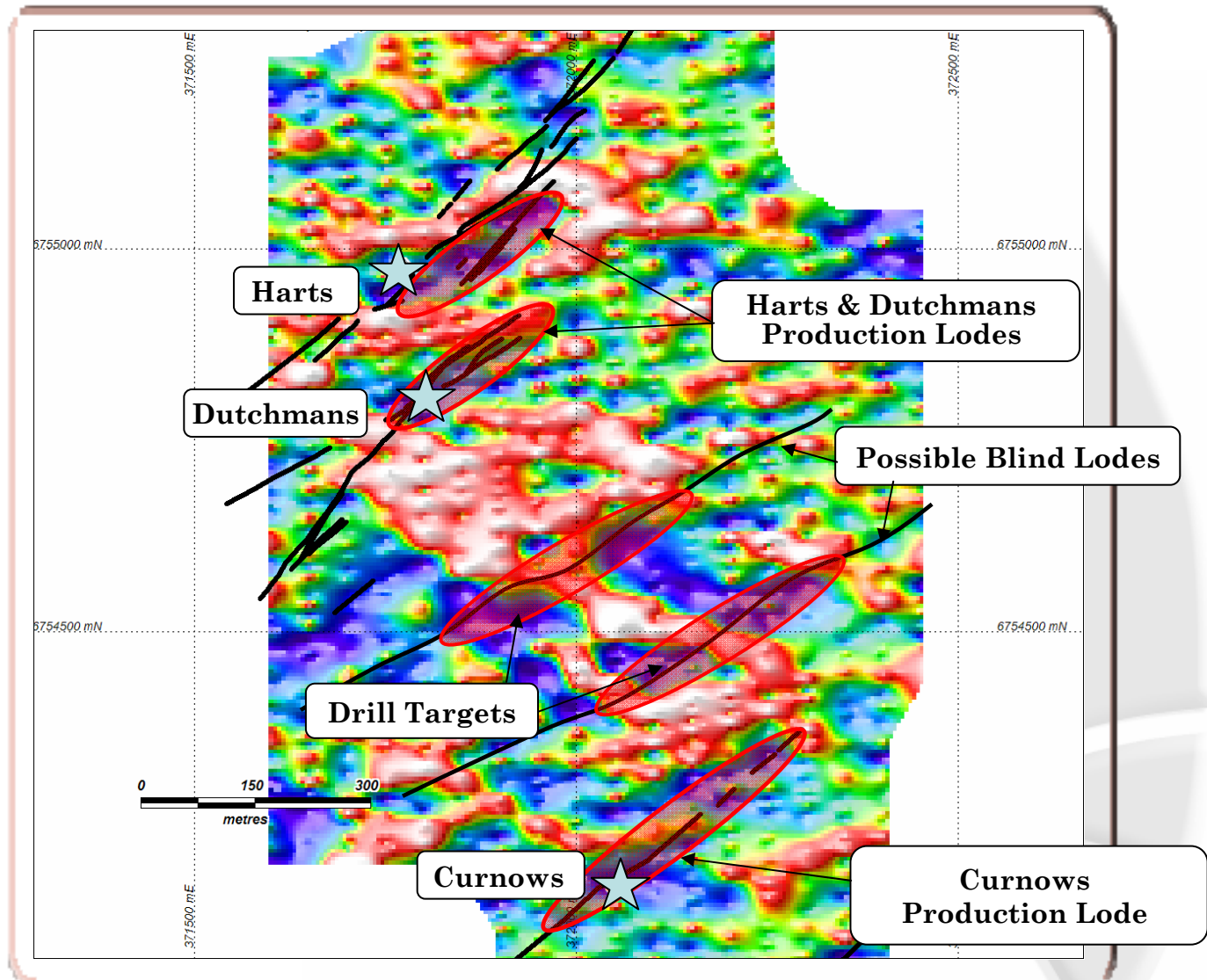
## Drilling commenced

Strong sulphide mineralisation observed in first 2 holes.





# Torrington Project: tin



IP Chargeability results from Harts, Dutchmans & Curnows

# Tallebung Project: tin-tungsten



## Site of large scale alluvial mining

- Historical production estimated at approx 2000 tonnes Sn to 1971.



## YTC targeting bulk tonnage porphyry tin-tungsten deposit

- Historic drilling results include 50m @ 0.27% Sn



Tallebung – historic central lead open pit

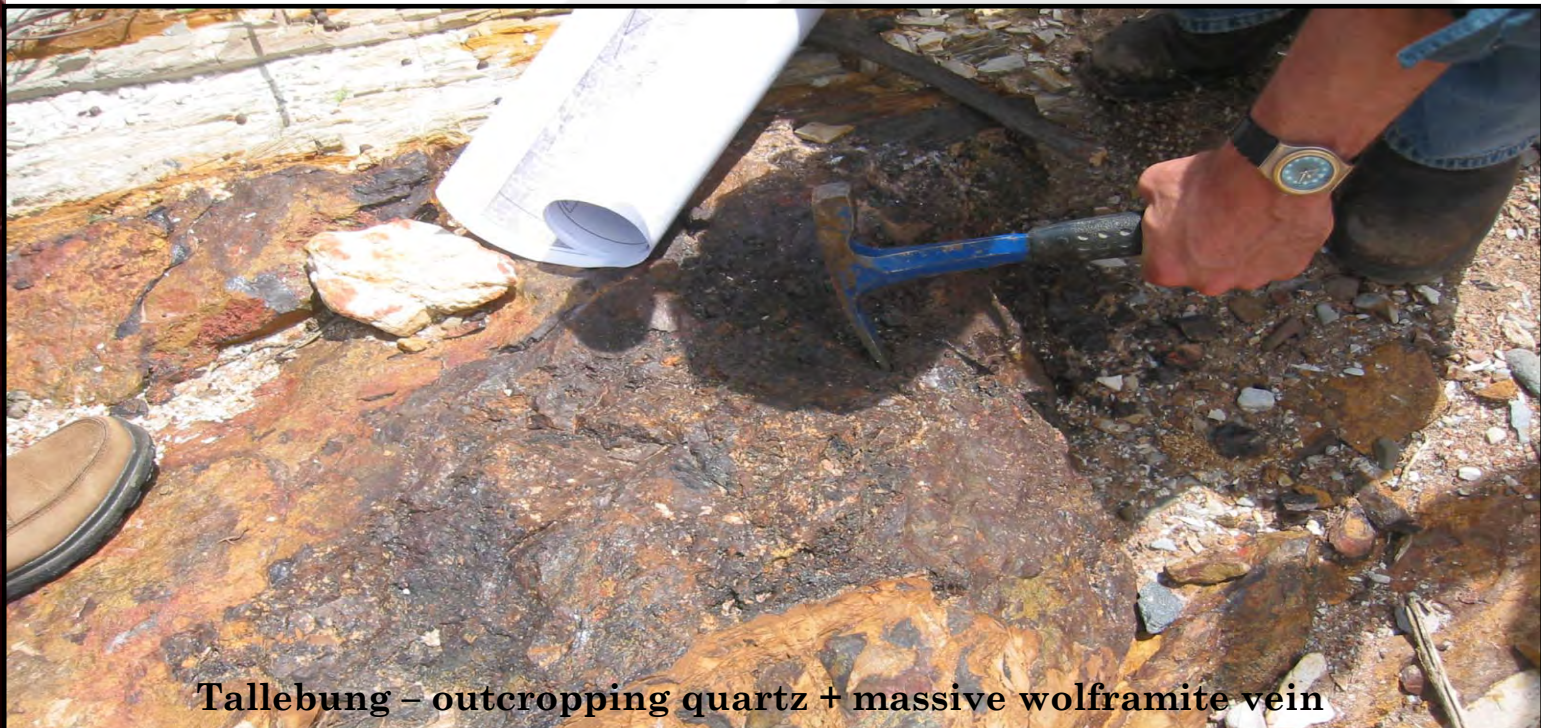


# Tallebung Project: tin-tungsten



## Porphyry tin-tungsten potential

- Historical drilling:
  - DDH17: 50m @ 0.27% Sn to EOH
  - DDH16: 54m @ 0.13% Sn to EOH
- Recovery and re-sampling of historic drill holes commences shortly.



Tallebung – outcropping quartz + massive wolframite vein

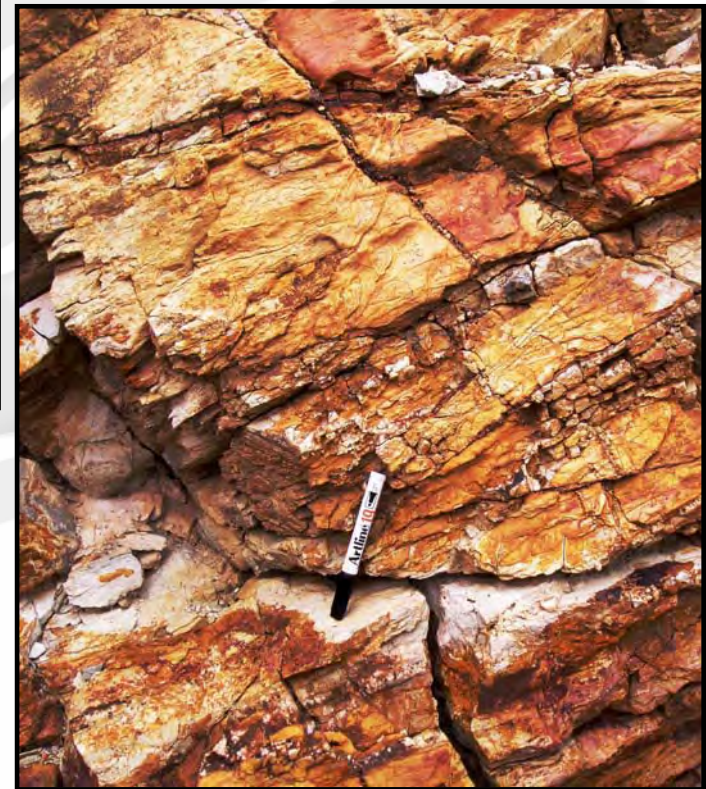


# Tallebung Project: tin-tungsten



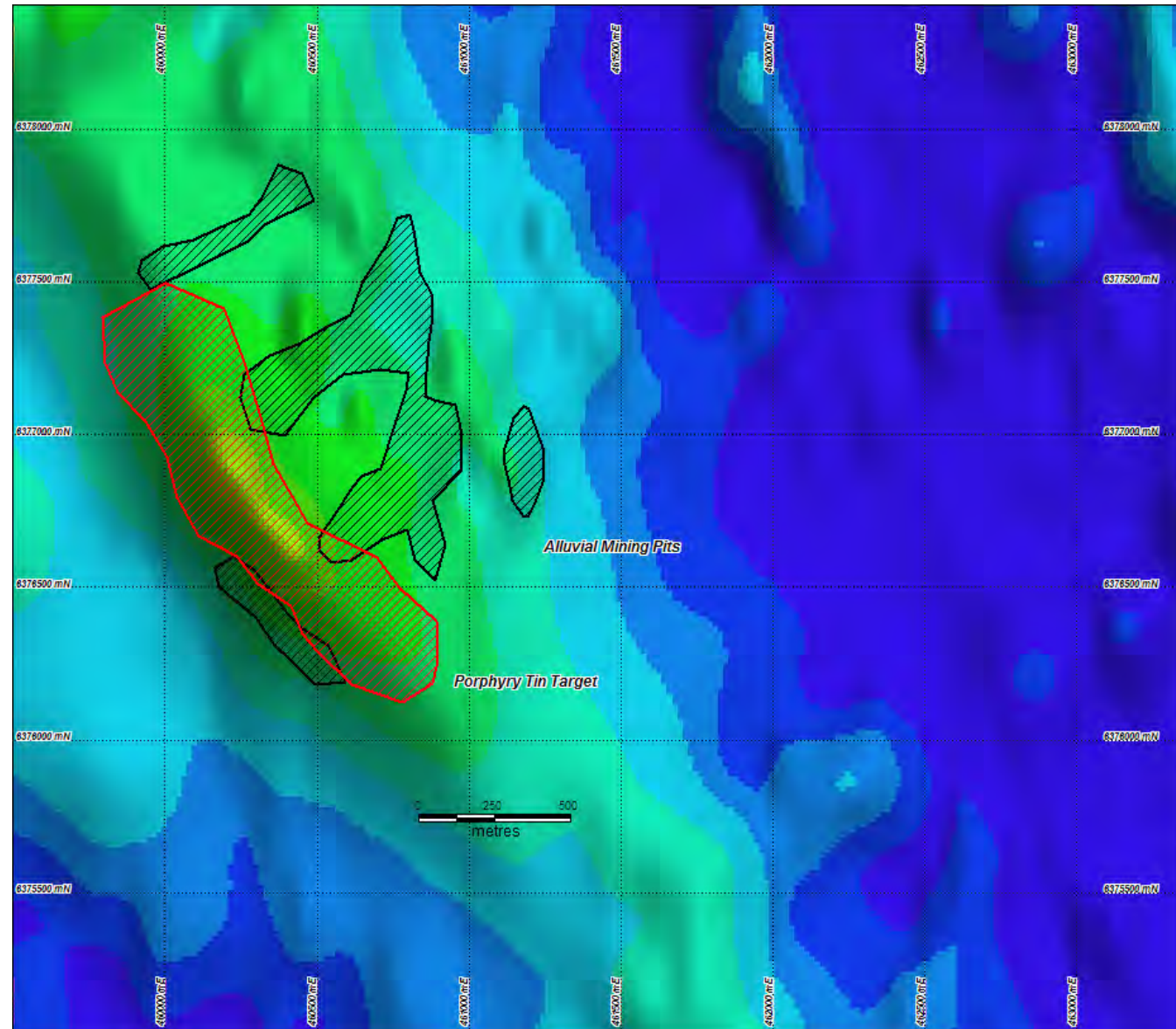
**Plunketts Shaft**

**Porphyry quartz  
stockwork**





# Tallebung Project: tin-tungsten



# Giants Den Project: tin



## **Two target types:**

- Bulk tonnage, hard rock target at Giants Den
- Alluvial cemented gravels (Watsons Creek)



## **Rock chip sampling:**

- Tin values to 2.75% Sn



## **Land Access:**

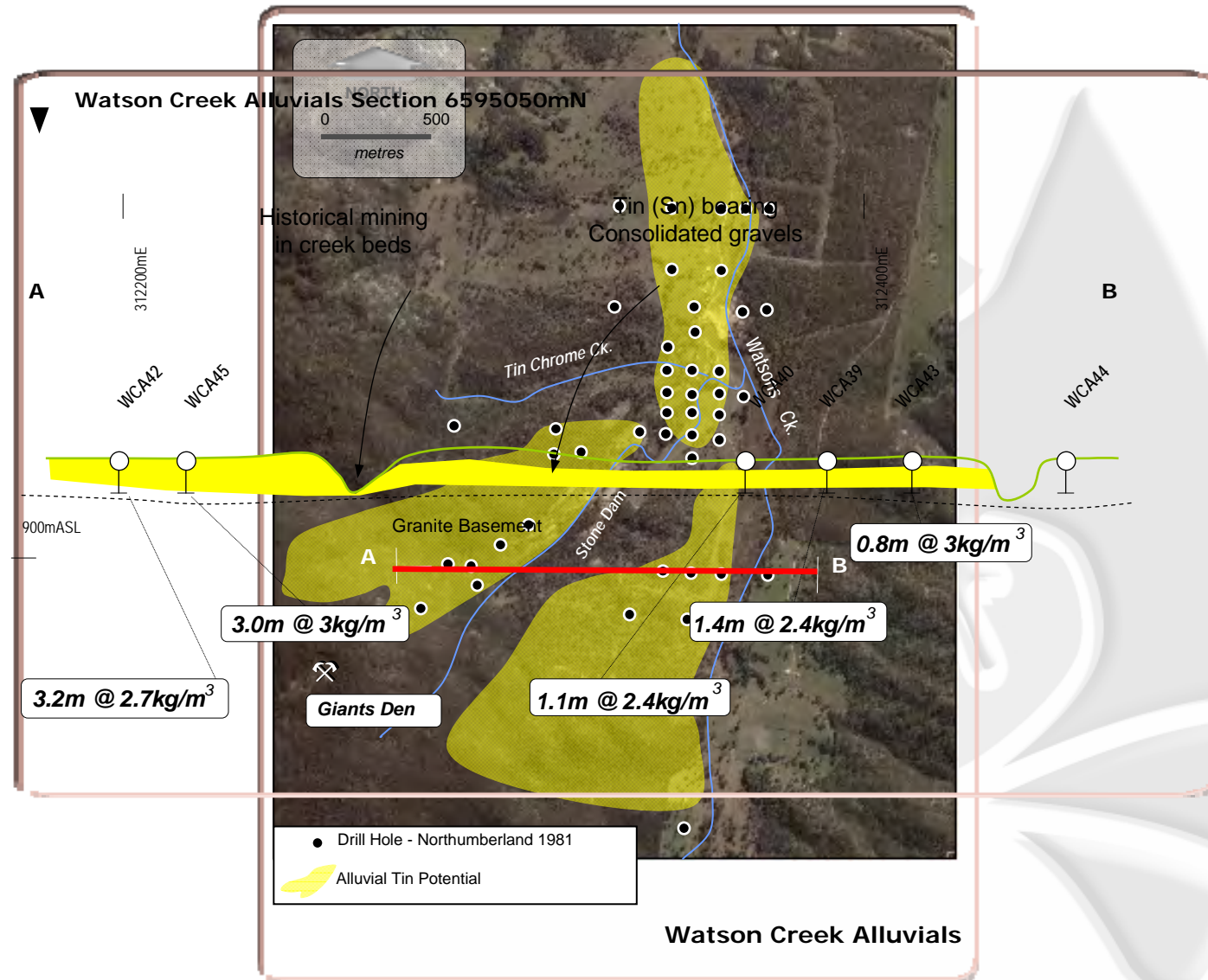
- YTC is mid-way through a 'Right to Negotiate' process for access to Giants Den under the Native Title Act.

**Alluvial dredge tailings from Watsons Creek**





# Giants Den Project: tin



# Kadungle Project: copper-gold

## ➤ **Diamond drilling and aircore drilling programmes completed:**

- Best Results:

KDD001: 156m @ 0.15g/t Au & 0.1% Cu.

KAC040: 6m @ 1.0% Pb

KAC049: 6m @ 0.18g/t Au

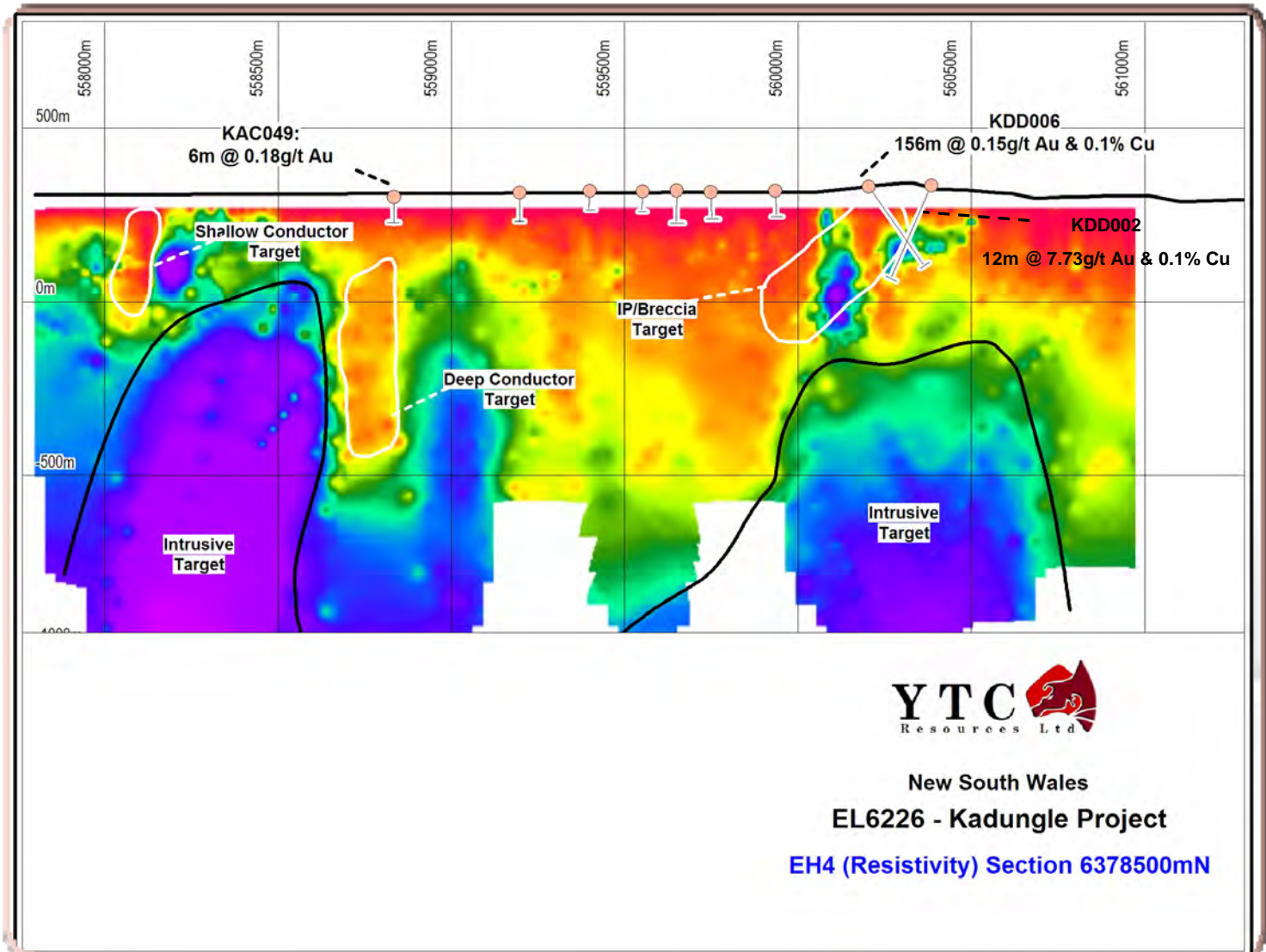
## ➤ **EH4 Geophysics highlights new intrusive system**

- EH4 resistivity survey completed by Yunnan Group contractors.
- Highlights new porphyry prospect associated with anomalous gold in aircore





# Kadungle Project: copper-gold





# Baldry Project: gold



## **Focussed on historic Mt Aubrey Gold Mine**

- Mined 1990-1991 by BHP gold
- Only 1 previous diamond core hole (220m) along a 1km vein strike



## **Drilling of 3 holes completed beneath the Mt Aubrey Gold Mine**

- 40m intersection of minor banded quartz veins in hole MAD004
- Final gold assay results awaited







## **Tin Exploration**

Dominant tenement holding in 3 major tin fields in NSW. Successful exploration to add value in buoyant tin market.



## **Copper-Gold Exploration**

Building on strong results from Kadungle & Baldry Projects.



## **Advanced Projects**

Ongoing review of advanced resource projects for acquisition in partnership with the Yunnan Tin Group. Project scope includes tin, non-ferrous and precious metals.