



PEAK GOLD MINES

CCC – MARCH 2020

Peak Gold Mines Employees:

- Total workforce: 134 employees
- Residing in Cobar: 122 employees (91% of total workforce)
- Residing within 300km radius of Cobar: 5 employees (4% of total workforce)

Pybar Employees:

- Total workforce: 200 employees and labour hire
- Residing in Cobar: 109 employees (54.5% of total workforce)
- Residing within 300km radius of Cobar: 5 employees

It is our preference for employee's to be based locally however, to attract the right people for specialist roles, it is sometimes necessary to have flexible working arrangements

Environmental Monitoring - Wind Speed Nov – Feb 2020

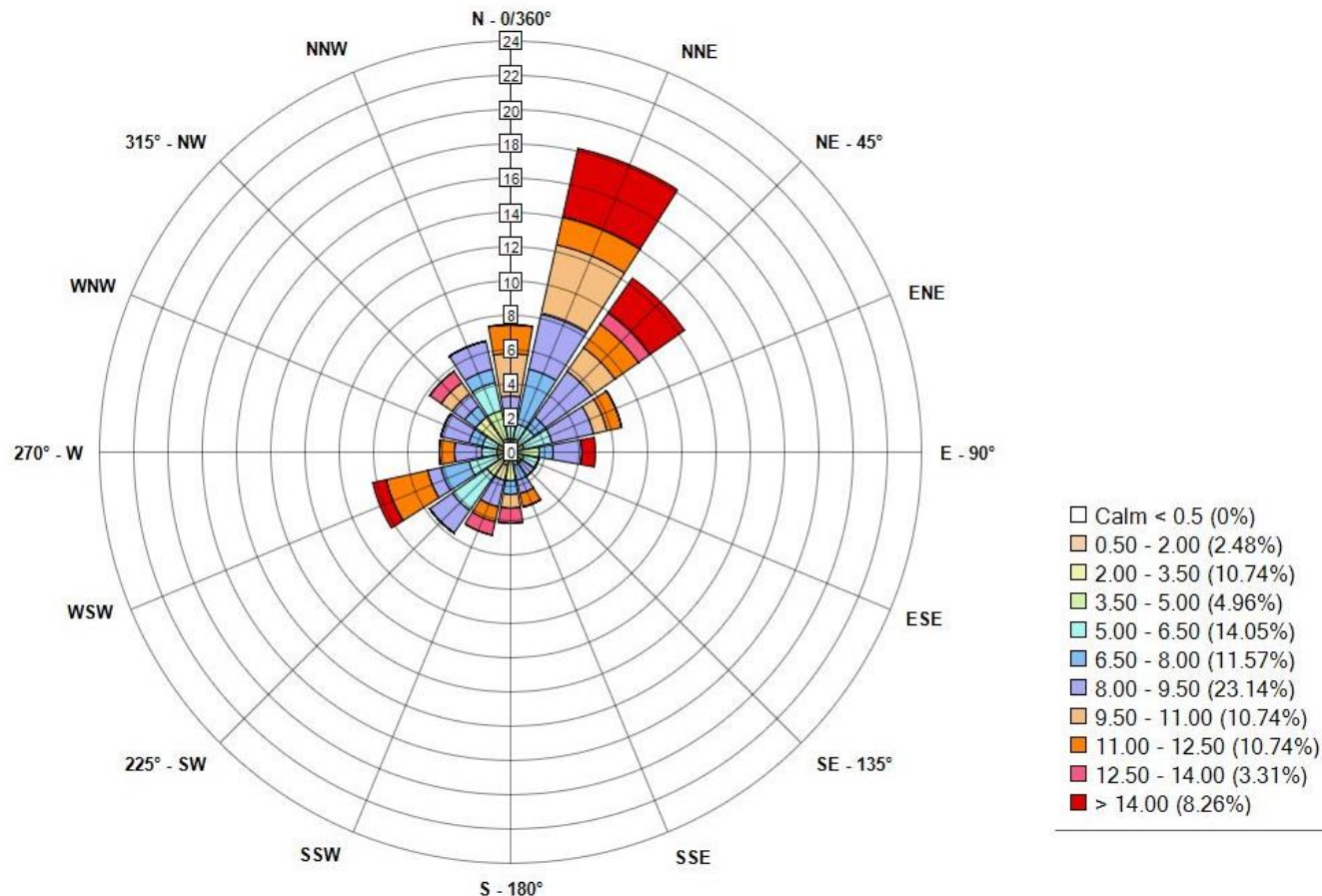


Wind Rose Report for: Peak Gold Cobar - Daily Summary

VWDIR Vector Wind Dir and VWSP Vector Wind Spd in km/h

Period: 2019-11-01 00:00 to 2020-02-29 23:59

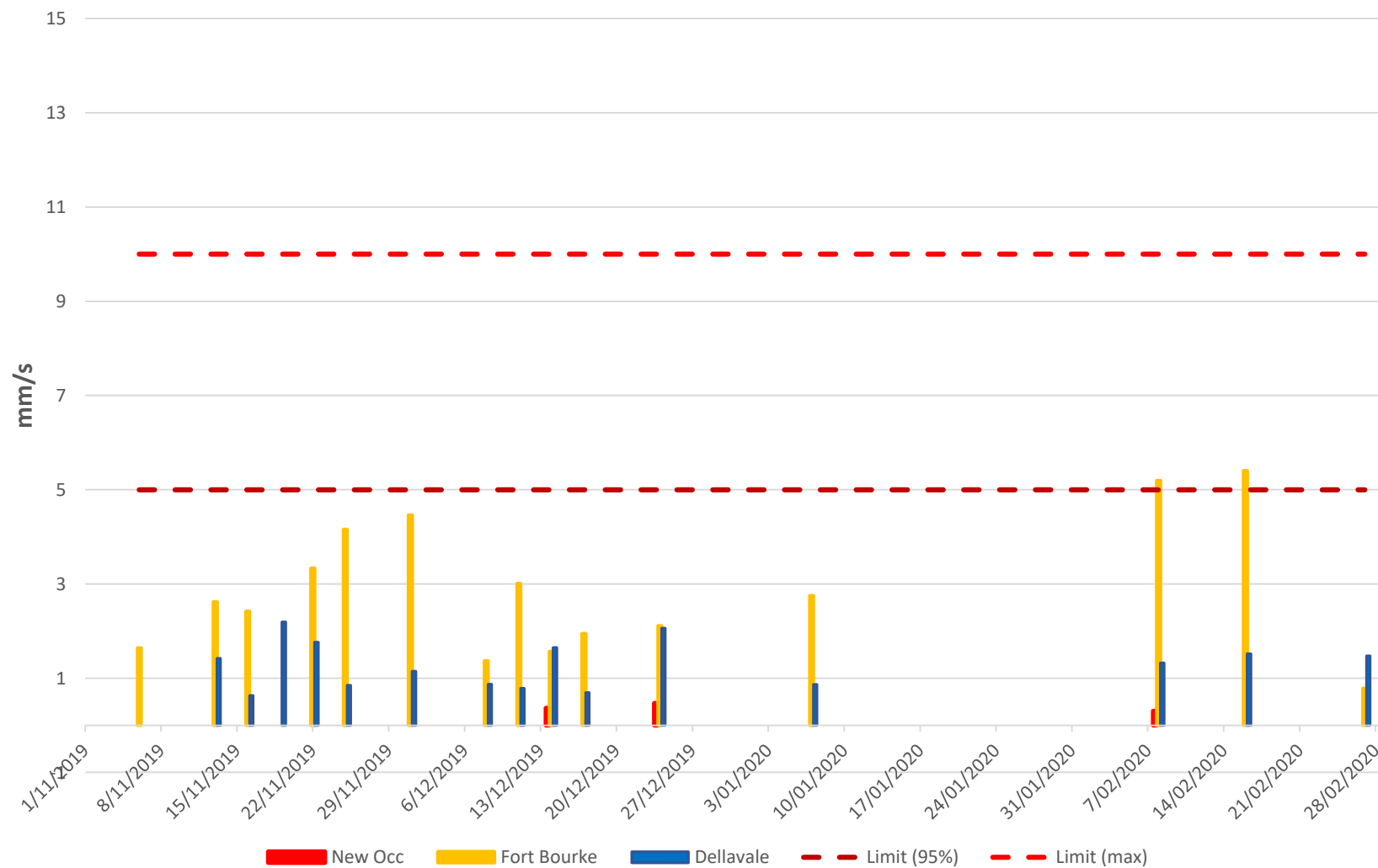
Direction the Wind is Blowing To



Environmental Monitoring - Blasting



Production Blasting Nov - Feb 2020

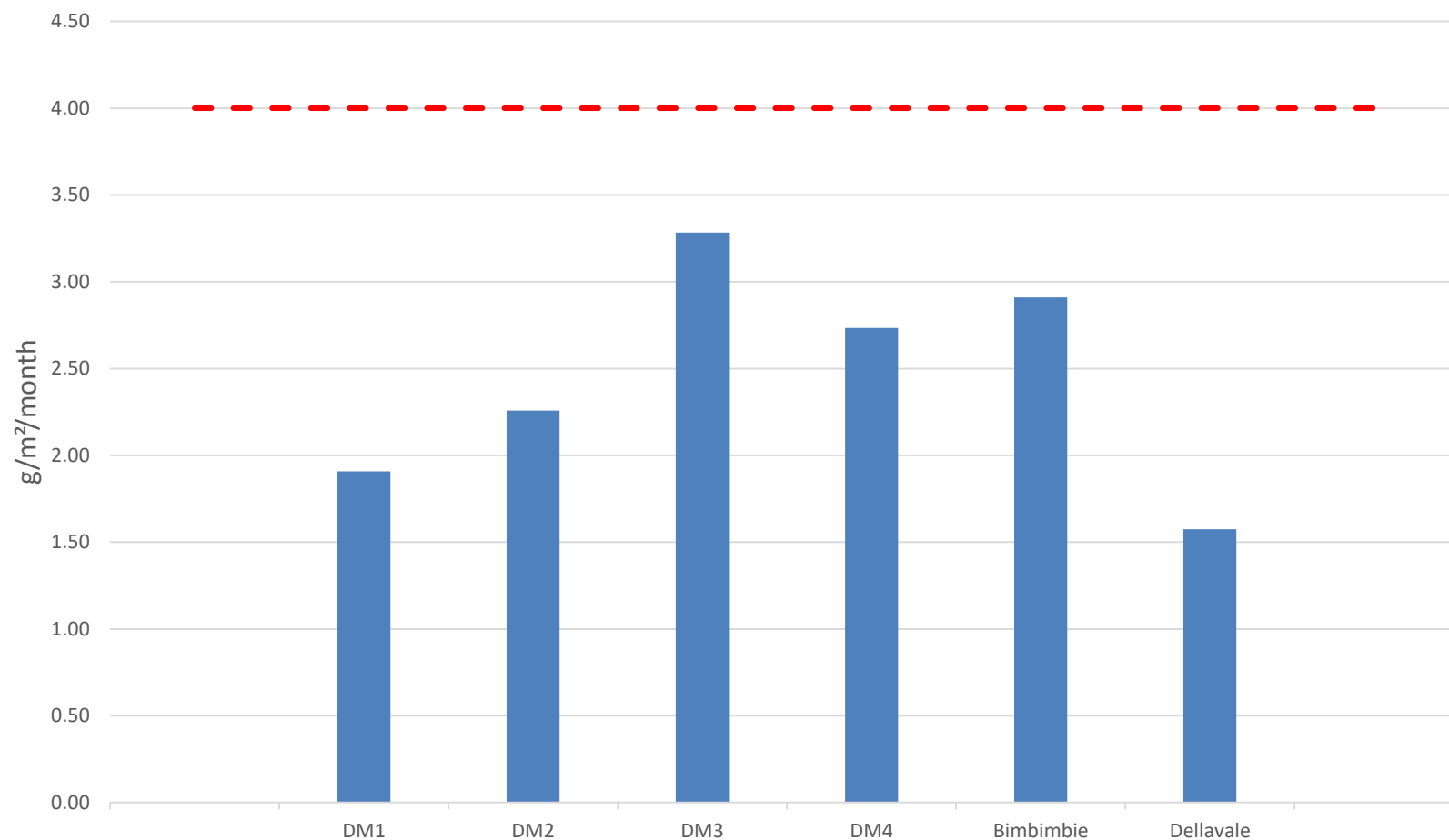


Complaints Nov – Feb 2019

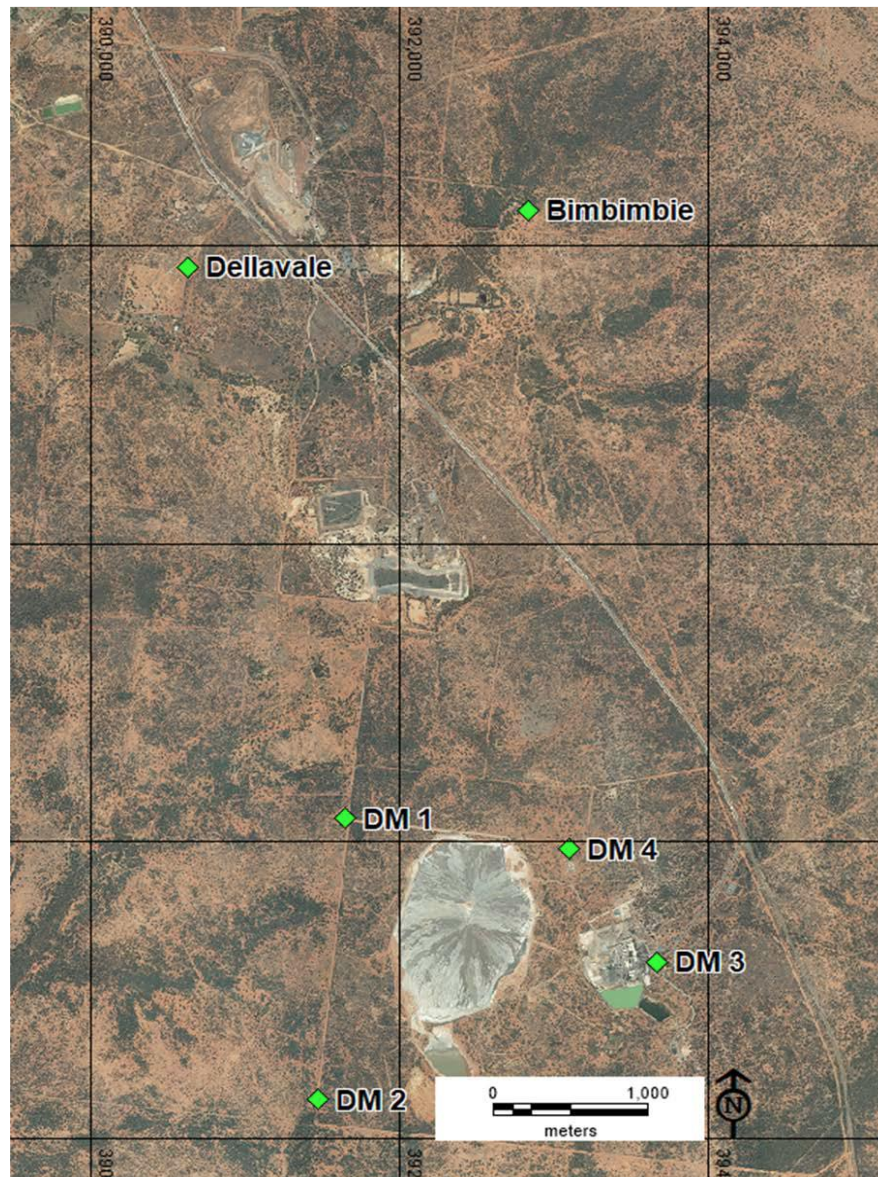


Date	Notification only	Complaint	Reason for complaint
6/11/2019		Yes	Blasting Vibration
13/11/2019		Yes	Blasting Vibration
16/11/2019		Yes	Blasting Vibration
22/11/2019		Yes	Blasting Vibration
22/11/2019		Yes	Blasting Vibration
22/11/2019	Yes		Blasting Vibration
22/11/2019	Yes		Blasting Vibration
22/11/2019	Yes		Blasting Vibration
25/11/2019		Yes	Blasting Vibration
8/12/2019		Yes	Blasting Vibration
9/12/2019		Yes	Blasting Vibration
8/02/2020		Yes	Blasting Vibration
16/02/2020		Yes	Blasting Vibration

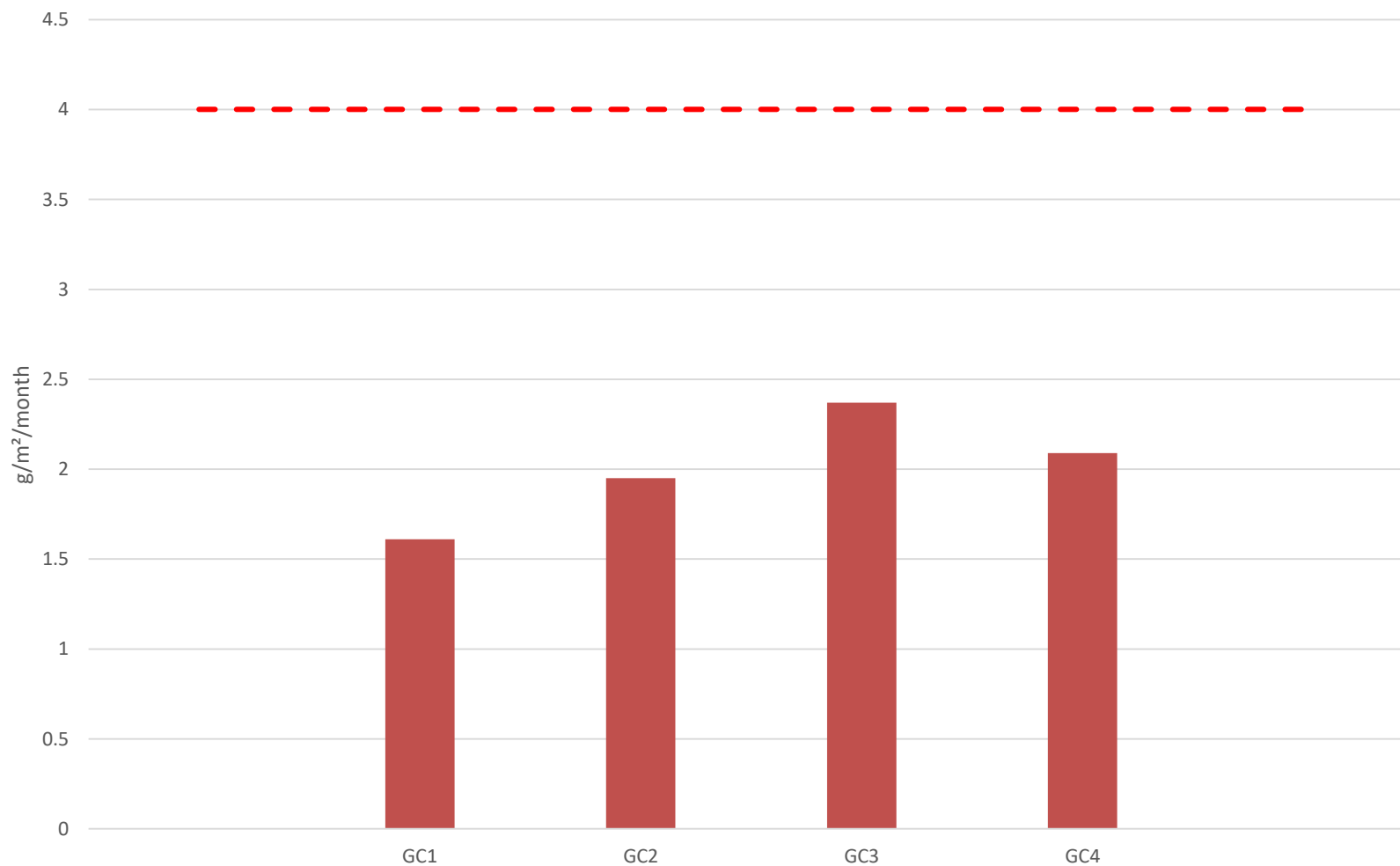
Annualised Compliance Dust Deposition Gauges (Feb 2019 to Jan 2020)



PGM Dust Monitoring Locations



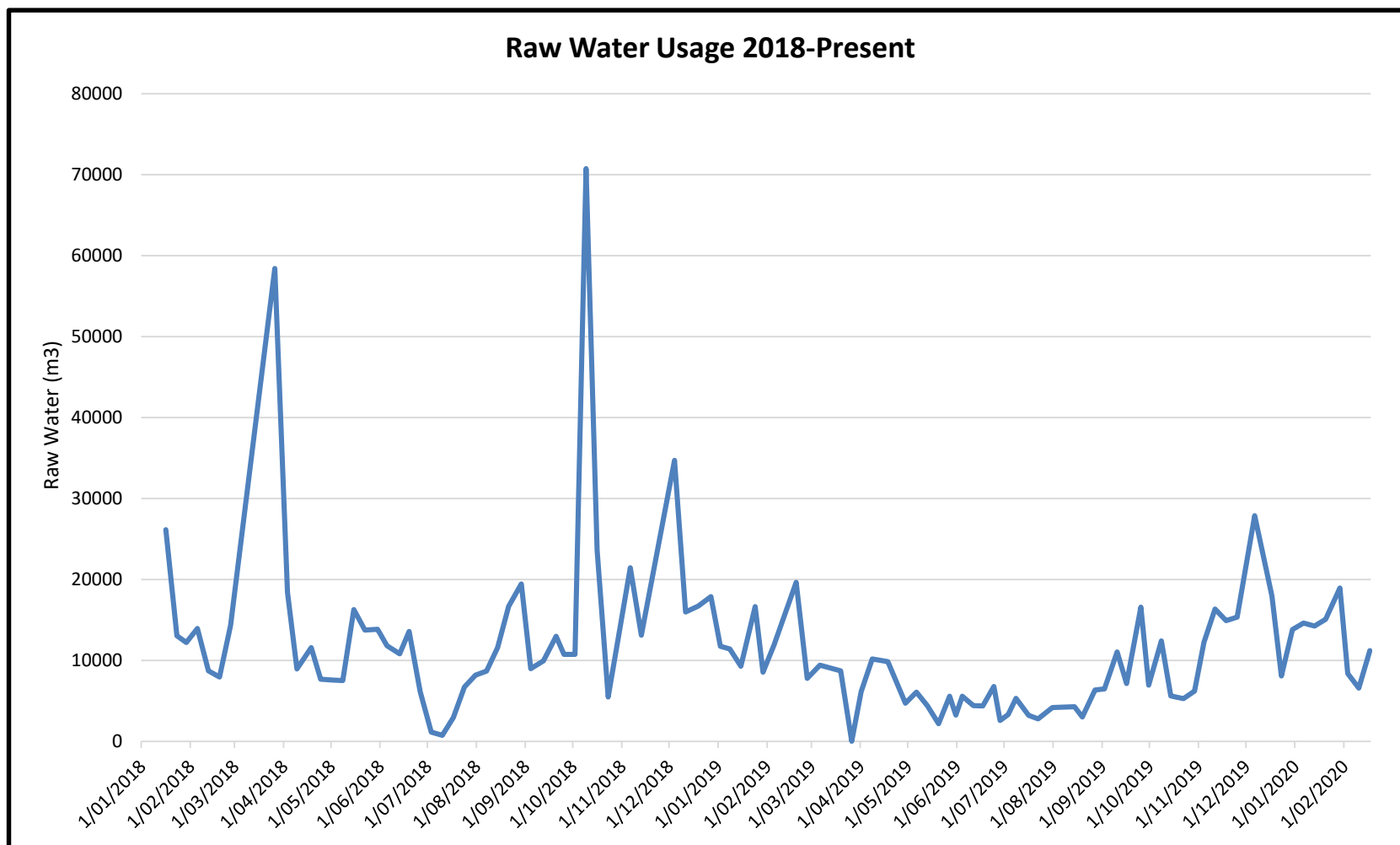
Annualised Town Dust Deposition Gauges (Apr 2019 to Jan 2020)



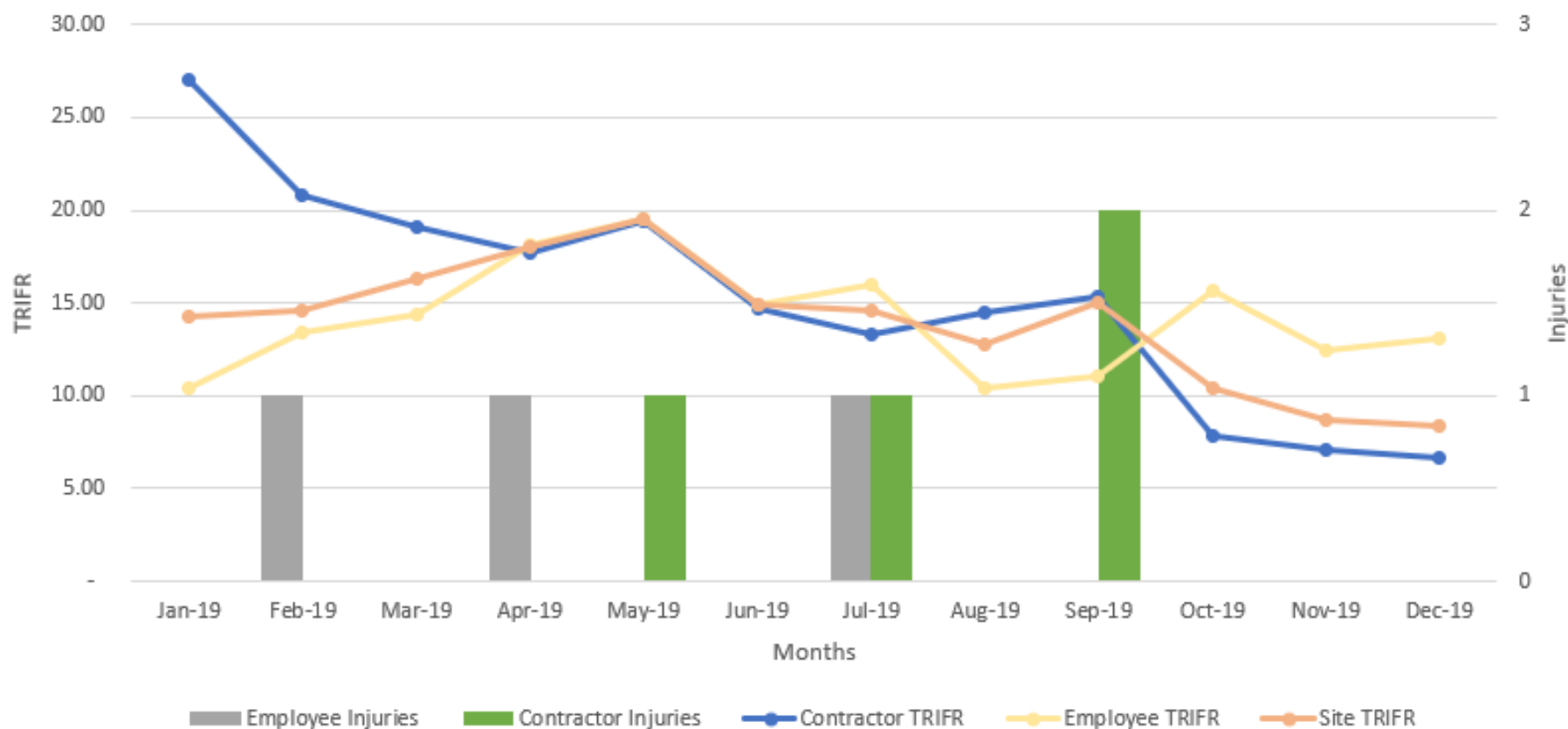
Town Dust monitor Locations



Water Balance



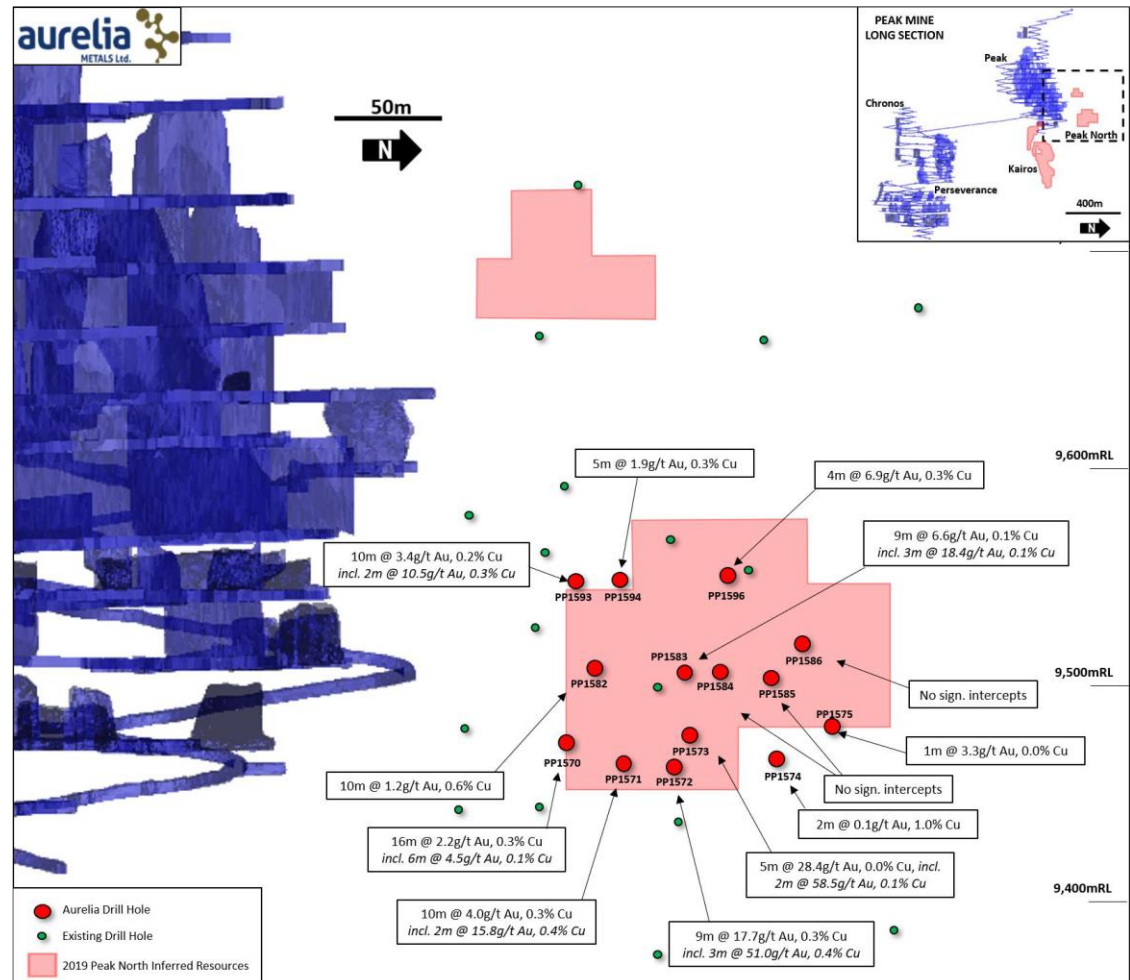
Total Recordable Injury Frequency Rate (Rolling) and Monthly Injuries



Recent drill results from Peak North Prospect:

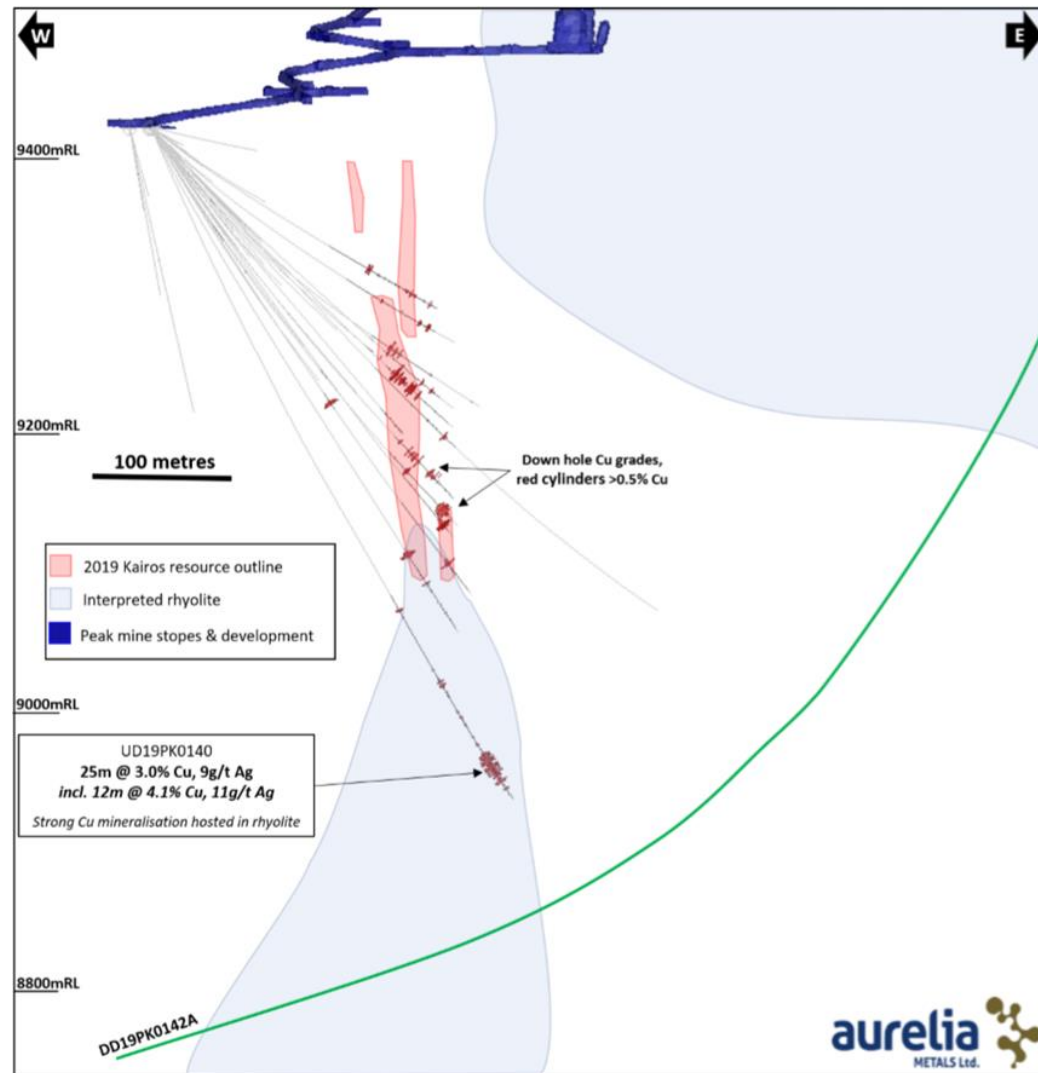
Strong gold mineralisation intercepted 150 metres north of the Peak Mine workings:

- **9 metres at 17.7g/t Au, including 3 metres at 51.0g/t Au**
- **5 metres at 28.4g/t Au, including 2 metres at 58.5g/t Au**
- **9 metres at 6.6g/t Au, including 3 metres at 18.4g/t Au**



Exploration

- Cross section of the surface drilling in the Kairos deeps.



Mill Upgrade - Project

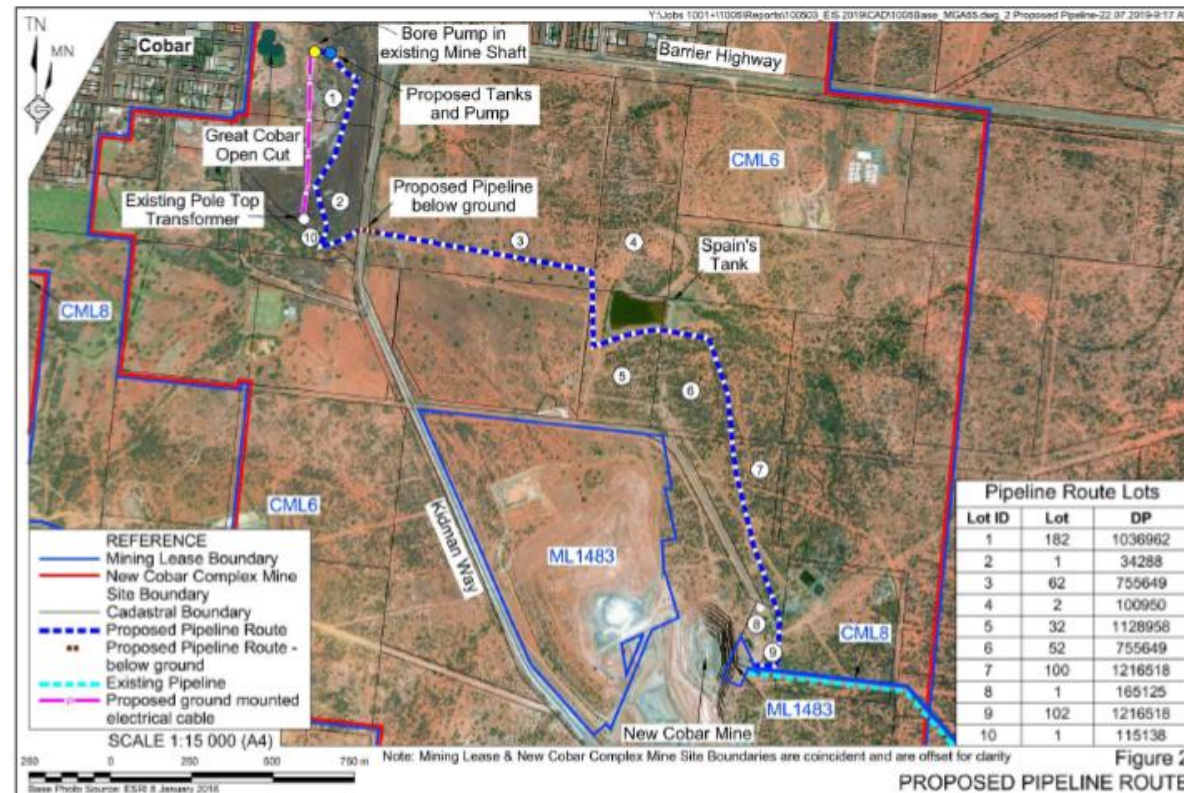


- Investment by Aurelia into the process plant of approximately \$53M.
- Project on schedule for completion of commissioning Q1 2020.
- 46 local vendors used on the project thus far, \$14.4M spent through local vendors which equates to 28% of total project construction.
- Pelican flights which began late 2019 have been utilised by project personnel. Reintroducing flight to Cobar assisted in fatigue management of workforce.



Great Cobar Pipeline:

- Great Cobar historic mine estimated to contain 1,000 to 1,500ML of groundwater.
- PGM received Development Consent (2019/LD-00024) to install infrastructure required to pump water from Great Cobar.
- The purpose of this project is to allow Peak to be completely water self reliant, meaning additional water in the system for continued supply to Cobar residents.



Great Cobar Pipeline:

- Pumping of Great Cobar groundwater commenced
- Drill rig was used to gain access to the water at Plat 6.
- The water quality includes high total dissolved solids (TDS) and heavy metals.
- Additional water treatment is necessary prior to use.
- Peak are now awaiting the arrival of a reverse osmosis (RO) plant.



Great Cobar Pipeline Monitoring:

- Groundwater level and quality monitoring has been conducted in the CDRUFC bore for the previous four months;
- A water level logger will be installed in the Rugby Club bore to measure the following;
 - Water Level
 - Water Temperature
- Drone videography and photography of the Great Cobar Open Pit commenced on 07/02/2020.



Environmental Impact Statement (EIS) for New Cobar Complex

Secretary's Environmental Assessment Requirements (SEARs)

- Issued on the 12th of February
- Significant developments require an Environmental Impact Statement (EIS) in accordance with the *Environmental Planning and Assessment Act 1979*
- Issued by the Secretary of the Department of Planning, Industry and Environment (DPIE)
- Outline the requirements for an EIS
- Integration of State and Commonwealth legislative requirements
- Prepared in consultation with several agencies including:
 - DPIE units and branches
 - NSW Environment Protection Authority (EPA)
 - Resources Regulator
 - Cobar Shire Council
 - Department of Health
- Informed by the EIS Scoping Report

Secretary's Environmental Assessment Requirements (SEARs)

Objective of SEARs is to focus the EIS on issues that:

- Cause the greatest impact
- Affect the most sensitive aspects of the environment
- Are of greatest interest or concern to the community

Major projects website:

<https://www.planningportal.nsw.gov.au/major-projects/project/26616>

Issues that the SEARs requires the EIS to address:

Land resources

Subsidence

Air quality

Human health

Water

Noise, vibration and Blasting

Biodiversity

Heritage

Transport

Waste

Rehabilitation and Final Landform

Hazards

Social

Economic

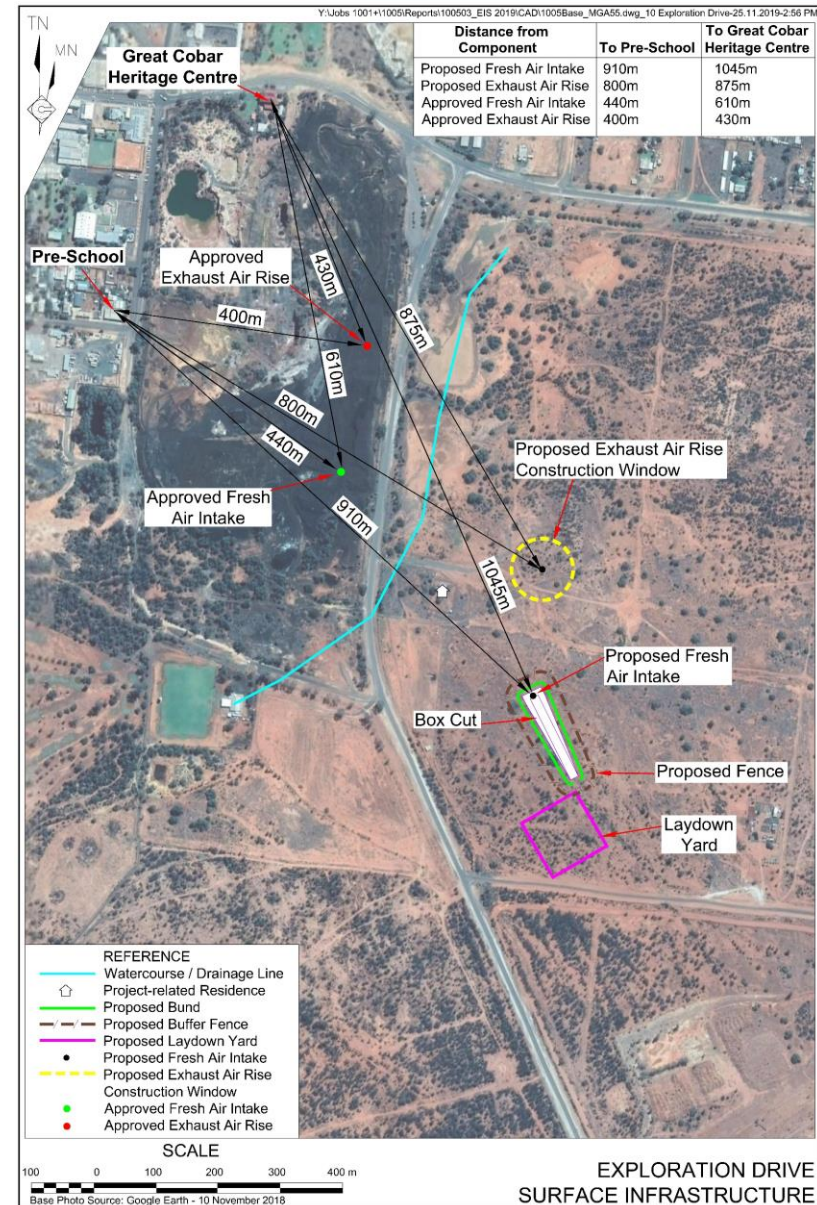
Visual

Proposed Amendment to Great Cobar Decline

Review of Environmental Factors (REF)

- The approved REF relates to the underground exploration and includes:
 - A ~2km decline
 - Ventilation system
 - 20,000m resource drilling
 - Removal of a 20,000T bulk sample
- Additional surface exploration is proposed
- PGM are proposing to amend the approved ventilation setup (REF V2.0);
- A number of assessments have been or are being completed associated with the REF V2.0:
 - Noise Modelling and assessment
 - Ecological and Heritage assessment of the proposed surface disturbance areas
 - Air Quality modelling and assessment
 - Groundwater assessment completed by Ecological

The REF V2.0 is planned to be submitted by end of March 2020.



Tailings Storage Facility – Life Of Mine Approval



- PGM are currently preparing a development application in support of a life-of-mine (LOM) construction program for the tailings storage facility (TSF)
- The proposal includes three components
 1. Tailings Storage Facility lift
 2. Transportation of Waste Rock from Queen Bee to Peak
 3. Surface exploration
- Application currently in progress
 - Feedback encouraged

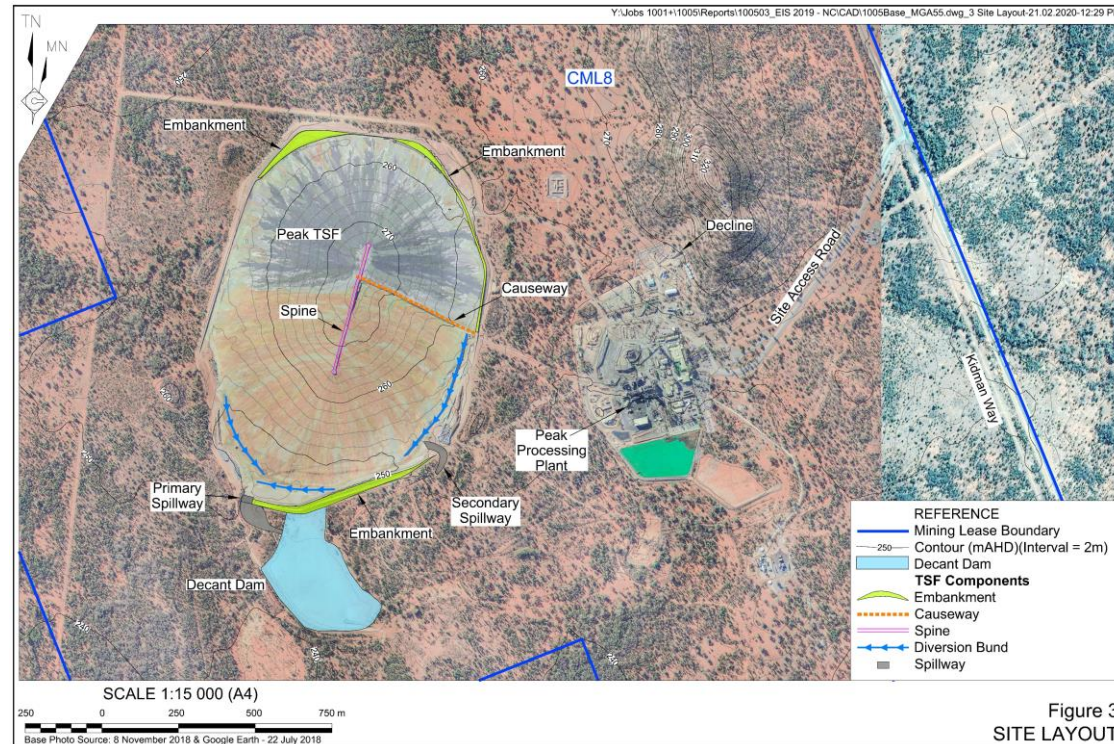


Figure 3
SITE LAYOUT

Tailings Storage Facility – Life Of Mine Approval



1. Tailings Storage Facility lift

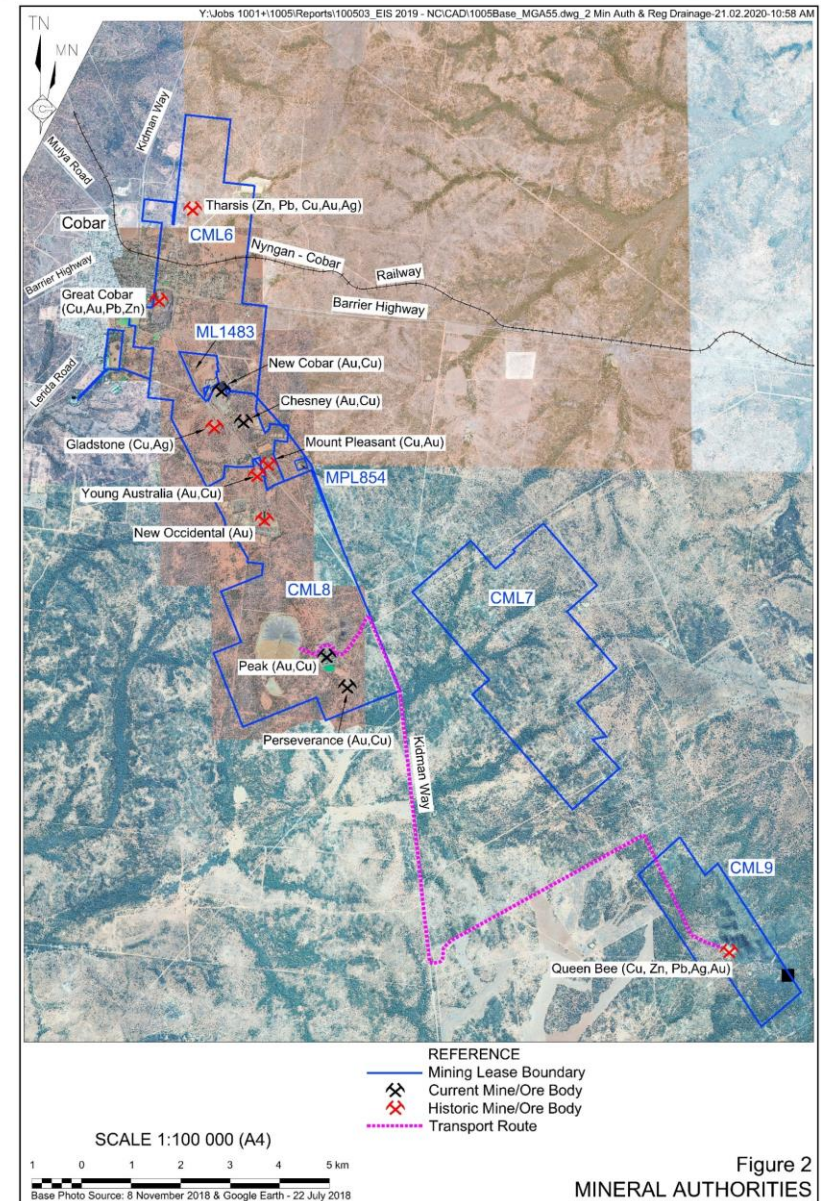
- TSF currently approved to Stage 4
- Proposal would allow for Stages 5, 6 and 7
- No additional land disturbance
- Final elevation around 300m AHD or 17m higher than current stage
- Provide tailings capacity until 2035
- Environmental impacts unchanged (as per current TSF)

2. Transportation of Waste Rock from Queen Bee to Peak

- Approval require to transport that material to Peak Mine
- Will be used for TSF construction
- Traffic assessment required. No other environmental impacts

3. Surface exploration

- Approval required for surface exploration on existing Mining Leases
- Within disturbed areas only
- No environmental impacts



Waste:

- PGM has recently changed waste providers.
- As part of this process, general tidy up has occurred across site
- Focus area has included the waste storage/collection area.
- Aim is to create a more efficient and effective waste management process.



Environmental Initiatives



Vacational students/apprentices:

- Lucas Rowston: Geology
- Gona Pradhyumna: Mining
- Rob Grant: Environment
- Reilley Brown: Electrical Apprentice
- Ben Anderson: Laboratory
- Scott Mackenzie: Geology (Absent)

Community Meeting:

- Recent community meeting held on the 27th Feb 2020.

Donations:

- PGM donated \$5000 to the Cobar District Rugby Union Football Club for the 2020 season.
- PGM donated \$2000 to the Cobar Senior Men's Swimming Club annual Carnival in Cobar.
- PGM donated \$5000 to the Cobar Miners Race Club.

